

Changed Oct 27, 2025 10:35

Reviewed Oct 27, 2025 10:35

Erudus ID 50fda380a72b4598922d724582543fe4

Version 5.0

Status Published

10962

Fruit Loaf Cake

Fruit Loaf Cake

PRODUCT DESCRIPTION

Rich Sponge cake packed with sultanas and topped with sugar nibs and a syrup glaze.

Brand	Lomond Fine Foods Ltd
Manufacturer Product Code	10962
Product Type	Food
Product Category	Cakes and Tarts
Storage Type	Frozen
Erudus ID	50fda380a72b4598922d724582543fe4
Specification Type	Bakery Products



Outer Case GTIN 5060268090675



INGREDIENTS

Ingredient Declaration

Cake Mix (Sugar, Wheat Flour (**WHEAT** Flour, Calcium Carbonate, Iron, Niacin, Thiamin), Rapeseed Oil, Modified Maize Starch, Whey Powder (**MILK**), Raising Agents (Diphosphates, Sodium Carbonates), Emulsifiers (Mono- and Diglycerides of Fatty Acids, Polyglycerol Esters of Fatty Acids, Sodium Stearoyl-2-Lactylate), **WHEAT** Gluten, Starch (Potato, Rice), Salt, Maltodextrin, Stabiliser (Carboxy Methyl Cellulose), Thickener (Guar Gum), Anti Caking Agent (Silicon Dioxide), Natural Flavouring), Pasteurised Free Range Whole **EGG**, Water, Rapeseed Oil, Sultanas (20%) (Sultanas, Sunflower Oil), Invert Sugar Syrup, Sugar Nibs.

ALLERGENS

Product Contains:

Celery/Celeriac	No	Mustard	No
Cereals Containing Gluten	Yes	Nuts (Tree)	May Contain
Barley	May Contain	Almond nuts	May Contain
Oats	May Contain	Brazil nuts	No
Rye	No	Cashew nuts	No
Wheat (including Spelt and Khorasan)	Yes	Hazelnuts	May Contain
Crustacea	No	Macadamia (Queensland) nuts	No
Eggs	Yes	Pecan nuts	No
Fish	No	Pistachio nuts	May Contain
Lupin	No	Walnuts	May Contain
Milk	Yes	Peanuts	No
Molluscs	No	Sesame Seeds	No
		Soybeans	May Contain
		Sulphur Dioxide and Sulphites	May Contain

Risk Source:

Barley (Risk Source)	Line	Oats (Risk Source)	Line
Tree Nuts (Risk Source)	Line	Almond nuts (Risk Source)	Line
Hazelnuts (Risk Source)	Line	Pistachio nuts (Risk Source)	Line
Walnuts (Risk Source)	Line	Soybeans (Risk Source)	Line

Additional Allergen Information

For allergens, including cereals containing gluten, refer to ingredients in CAPITALS May contain traces of: oats, barley, tree nuts, soya and sulphites.

SUPPLEMENTARY
INGREDIENT
INFORMATION

Palm Oil	No
Hydrogenated Vegetable Oil/Fat	No
GM Protein/DNA	No

ADDITIVES

Product Contains:

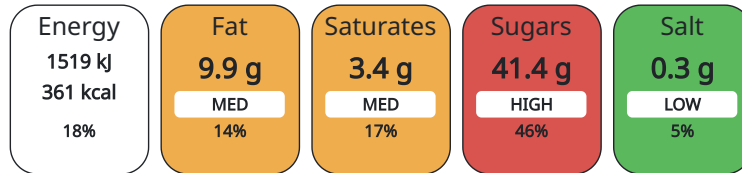
Artificial Antioxidants	No	Artificial Flavourings	No
Artificial Colours	Yes	Artificial Preservatives	Yes
Artificial Flavour Enhancers	No	Artificial Sweeteners	No

DIET SUITABILITY

Vegan Diet	No	Vegetarian Diet	Suitable for
Halal Diet	No	Kosher Diet	No

NUTRITIONAL
INFORMATION AS
SOLD

Each 100g/ml portion contains:



of your reference intake.

Typical values per 100g/ml : Energy 361kcal / 1519kj

Nutrient	per 100g	RI per 100g
Energy (kJ)	1519 kJ	18%
Energy (kcal)	361 kcal	18%
Fat	9.9 g	14%
of which Saturates	3.4 g	17%
Carbohydrate	61.9 g	24%
of which Sugars	41.4 g	46%
Protein	4 g	8%
Salt	0.3 g	5%

HFSS (HIGH IN
FAT, SALT AND
SUGAR)
HANDLING &
STORAGE
INFORMATION

HFSS Status	Yes
-------------	-----

Directions For Use

Once opened store in an airtight container and consume within 5 days

Storage Instructions

Store at -18°C or colder. Defrost for 6 - 8 hours before serving. Ambient: Store in a cool, dry place.

Shelf Life from Time of Production	540 Days
------------------------------------	----------

ACCREDITATIONS/
CERTIFICATIONS/
ASSURANCE
SCHEMES

BRCGS Certified	Roundtable of Sustainable Palm Oil (RSPO)
-----------------	---

ORIGIN	Product Country of Origin	United Kingdom					
	Additional Origin Details	Produced in Scotland					
	Origin of the Primary Ingredient	United Kingdom					
PRODUCT CHARACTERISTICS	Standards Testing						
	Do you undertake trend analysis of microbiological results?	Yes	Is shelf life testing undertaken?		No		
	Microbiological Standards						
	Organism	Description	Frequency	Target	Maximum	Sample (g or ml)	
	E. Coli (cfu/g or ml)		Occasionally	<0	10	100	
	Enterobacteriaceae (cfu/g or ml)		Occasionally	<10	100	100	
	Listeria SPP (cfu/g or ml)		Occasionally	<0	100	100	
	Staphylococcus Aureus (cfu/g or ml)		Occasionally	<0	0	100	
	Salmonella (cfu/g or ml)		Occasionally	<0	0	100	
	Yeast (cfu/g or ml)		Occasionally	<100	1000	100	
Moulds (cfu/g or ml)		Occasionally	<100	1000	100		
Aerobic Colony Count (ACC) (cfu/g or ml)		Occasionally	<1000	10000	100		
CONFIGURATION	Case Configuration					Inner Pack Configuration	
	Total Quantity of Inner Components in Outer Case	2 Units					
PRODUCT WEIGHTS	Inner Component						
	Variable Weight Consumer Item	Yes					
	Inner Component Weight	1 kg					
	Outer Case						
	Outer Case Gross Weight	2.11 kg					
	Outer Case Net Weight	2 kg					
PRODUCT DIMENSIONS	Inner Component						
	Inner Component Depth	220 mm					
	Inner Component Width	90 mm					
	Inner Component Height	90 mm					
	Outer Case						
	Outer Case Depth	240 mm					
	Outer Case Width	240 mm					
	Outer Case Height	113 mm					
PALLET INFORMATION	Quantity of Cases Per Pallet Layer	20 Cases	Pallet Height		1.3 MTR		
	Quantity of Layers Per Pallet	12 Layers					
	Quantity of Cases Per Pallet	240 Cases					
PACKAGING	Inner Component Packaging						
	Type	Materials	Weight	Recycled Material %	Recyclable	Returnable	Composite
	Film	Plastic	10 g				

Outer Case Packaging

Type	Materials	Weight	Recycled Material %	Recyclable	Returnable	Composite
Case	Paper/Cardboard	131 g				

OTHER
INFORMATION
CONTACT
INFORMATION

Commodity Code 1905203000

Address

Lomond Fine Foods Ltd
75 Keppochhill Drive
70 Spiersbridge Road, Thornliebank, Glasgow, G46 7SN
Springburn
Glasgow
G21 1HX
Scotland

P: (Phone) 0141 353 6777

The information on the [Erudus System](#) has been supplied by the manufacturers of the products and, whilst the owners of the Erudus System take steps to ensure the information is regularly updated, they give no warranty and no guarantee that the information is accurate. Product information and ingredients may change, please always read product labels carefully in addition to using the information provided by Erudus.

We do not accept liability for any inaccuracies or incorrect information contained on this site.
Please visit <http://www.erudus.com/terms-and-conditions> for full terms and conditions.