

Changed Dec 24, 2025 12:41

Reviewed Dec 24, 2025 12:41

Erudus ID 64dbf20136bb4d35994c464d40fa4874

Version 4.0

Status Published

16490

Love Heart Shaped Empire Biscuits x 12

Love Heart Shaped Empire Biscuits

PRODUCT DESCRIPTION

A generous helping of mixed fruit jam, sandwiched between two short crust heart shaped biscuits, topped with a layer of white fondant & pink fondant lines.

Brand	CAKE
Manufacturer Product Code	16490
Product Type	Food
Product Category	Biscuits, Wafers and Crackers
Storage Type	Frozen
Erudus ID	64dbf20136bb4d35994c464d40fa4874
Specification Type	Bakery Products



Inner Component GTIN	5060268093782
Outer Case GTIN	5060268093782



INGREDIENTS

Ingredient Declaration

Biscuit Base (60%) (Wheat Flour (**WHEAT** Flour, Calcium, Iron, Niacin, Thiamin), Margarine (Palm Oil, Rapeseed Oil, Water, Salt, Emulsifier (Mono- and Diglycerides of Fatty Acids), Colours (Annatto norbixin, Curcumin), Flavouring), Caster Sugar, Water), Fondant (20%) (Sugar, Vegetable Fat (Coconut), Glucose Syrup (**SULPHITES**), Water, Humectant (Sorbitol Syrup), Alpha cyclodextrin, Emulsifier (Citric Acid Esters of Mono-and Diglycerides of Fatty Acids), Salt, Preservative (Potassium Sorbate), Acids (Citric Acid, Monopotassium Tartrate), Natural Flavouring), Mixed Fruit Jam (20%) (Sugar, Water, Concentrated Apple Purée, Concentrated Plum Purée, Acidity Regulators (Citric Acid, Trisodium Citrate), Concentrated Apricot Purée, Colour (Anthocyanin), Gelling Agent (Pectin), Natural Flavouring), Preservative (Potassium Sorbate), Colour (Ponceau).

ALLERGENS

Product Contains:

Celery/Celeriac	No	Mustard	No
Cereals Containing Gluten	Yes	Nuts (Tree)	May Contain
Barley	May Contain	Almond nuts	May Contain
Oats	May Contain	Brazil nuts	No
Rye	No	Cashew nuts	No
Wheat (including Spelt and Khorasan)	Yes	Hazelnuts	May Contain
Crustacea	No	Macadamia (Queensland) nuts	No
Eggs	May Contain	Pecan nuts	No
Fish	No	Pistachio nuts	May Contain
Lupin	No	Walnuts	May Contain
Milk	May Contain	Peanuts	No
Molluscs	No	Sesame Seeds	No
		Soybeans	May Contain
		Sulphur Dioxide and Sulphites	Yes

Risk Source:

Barley (Risk Source)	Line	Oats (Risk Source)	Line
		Milk (Risk Source)	Line
Tree Nuts (Risk Source)	Line	Almond nuts (Risk Source)	Line
Hazelnuts (Risk Source)	Line	Pistachio nuts (Risk Source)	Line
Walnuts (Risk Source)	Line	Soybeans (Risk Source)	Line

Additional Allergen Information

For allergens, including cereals containing gluten, refer to ingredients in CAPITALS May contain traces of: Oats, Barley, Egg, Soya, Egg and tree nuts *May have an adverse affect on activity and attention in children

SUPPLEMENTARY
INGREDIENT
INFORMATION

Palm Oil	Yes
Is palm oil sustainably sourced?	Yes
Hydrogenated Vegetable Oil/Fat	No
GM Protein/DNA	No

ADDITIVES

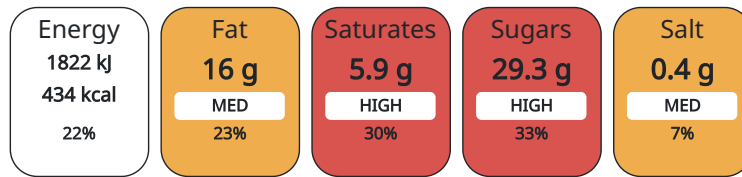
<i>Product Contains:</i>			
Artificial Antioxidants	No	Artificial Flavourings	Yes
Artificial Colours	Yes	Artificial Preservatives	Yes
Artificial Flavour Enhancers	No	Artificial Sweeteners	No

DIET SUITABILITY

Vegan Diet	No	Vegetarian Diet	Suitable for
Halal Diet	No	Kosher Diet	No

NUTRITIONAL
INFORMATION AS
SOLD

Each 100g/ml portion contains:



of your reference intake.

Typical values per 100g/ml : Energy 434kcal / 1822kj

Nutrient	per 100g	RI per 100g
Energy (kJ)	1822 kJ	22%
Energy (kcal)	434 kcal	22%
Fat	16 g	23%
of which Saturates	5.9 g	30%
Carbohydrate	66.5 g	26%
of which Sugars	29.3 g	33%
Fibre	2 g	
Protein	4.9 g	10%
Salt	0.4 g	7%

HFSS (HIGH IN
FAT, SALT AND
SUGAR)

HFSS Status	Yes
-------------	-----

HANDLING &
STORAGE
INFORMATION

Directions For Use

Defrost for 6 - 8 hours before serving. Ambient: Store in a cool, dry place. Once opened store in an airtight container and consume within 5 days

Storage Instructions

Store at -18°C or colder. Defrost for 6 - 8 hours before serving. Ambient: Store in a cool, dry place.

Shelf Life from Time of Production 540 Days

ACCREDITATIONS/
CERTIFICATIONS/
ASSURANCE
SCHEMES

B Corp Certification

BRCGS Certified

BRCGS Storage and Distribution

ISO 14001 (Environmental Management)

ISO 45001 (Occupational Health and Safety)

Roundtable of Sustainable Palm Oil (RSPO)

ORIGIN

Product Country of Origin Scotland, United Kingdom

Additional Origin Details

Produced in Scotland

Origin of the Primary Ingredient Canada, Denmark, France, Germany, Poland, United Kingdom, United States of America

PRODUCT
CHARACTERISTICS

Standards Testing

Do you undertake trend analysis of microbiological results? Yes

Is shelf life testing undertaken? No

Microbiological Standards

Organism	Description	Frequency	Target	Maximum	Sample (g or ml)
E. Coli (cfu/g or ml)		Occasionally	<0	10	100
Enterobacteriaceae (cfu/g or ml)		Occasionally	<10	100	100
Listeria SPP (cfu/g or ml)		Occasionally	<0	100	100
Staphylococcus Aureus (cfu/g or ml)		Occasionally	<0	0	100
Salmonella (cfu/g or ml)		Occasionally	<0	0	100
Yeast (cfu/g or ml)		Occasionally	<100	1000	100
Moulds (cfu/g or ml)		Occasionally	<100	1000	100
Aerobic Colony Count (ACC) (cfu/g or ml)		Occasionally	<1000	10000	100

CONFIGURATION

Case Configuration

Inner Pack Configuration

Total Quantity of Inner Components in Outer Case 1 Units

Count per Inner Component 12

PRODUCT
WEIGHTS

Inner Component

Variable Weight Consumer Item Yes

Inner Component Weight 1.02 kg

Outer Case

Outer Case Gross Weight 1.12 kg

Outer Case Net Weight 1.02 kg

PRODUCT DIMENSIONS

Inner Component	
Inner Component Depth	0 mm
Inner Component Width	0 mm
Inner Component Height	0 mm
Outer Case	
Outer Case Depth	280 mm
Outer Case Width	210 mm
Outer Case Height	60 mm

PALLET INFORMATION

Quantity of Cases Per Pallet Layer	17 Cases	Pallet Height	1.7 MTR
Quantity of Layers Per Pallet	12 Layers		
Quantity of Cases Per Pallet	204 Cases		

PACKAGING

Inner Component Packaging						
Type	Materials	Weight	Recycled Material %	Recyclable	Returnable	Composite
Layer Card	Paper/Cardboard / Paperboard	33 g		Yes	No	
Wrapper	Plastic / OPP (Oriented Polypropylene)	7 g		Yes	No	
Outer Case Packaging						
Type	Materials	Weight	Recycled Material %	Recyclable	Returnable	Composite
Box	Paper/Cardboard / Cardboard	104 g		Yes	No	
Label	Paper/Cardboard / Paper	1 g		Yes	No	

OTHER INFORMATION

Intrastat/Taric Code	1905201000
Commodity Code	1905201000

Manufacturer Comments

Product is sold by count - 12 pieces per box

CONTACT INFORMATION

Address
Lomond Fine Foods Ltd
75 Keppochhill Drive
70 Spiersbridge Road, Thornliebank, Glasgow, G46 7SN
G21 1HX
Springburn
Glasgow
Scotland

anne@lomond.lls.com
0141 353 6777

The information on the [Erudus System](#) has been supplied by the manufacturers of the products and, whilst the owners of the Erudus System take steps to ensure the information is regularly updated, they give no warranty and no guarantee that the information is accurate. Product information and ingredients may change, please always read product labels carefully in addition to using the information provided by Erudus.

We do not accept liability for any inaccuracies or incorrect information contained on this site. Please visit <http://www.erudus.com/terms-and-conditions> for full terms and conditions.