

Changed Oct 23, 2025 11:03

Reviewed Oct 23, 2025 11:03

Erudus ID 0654ec6f15ed4872b585f6465958b96b

Version 3.0

Status Published

39318

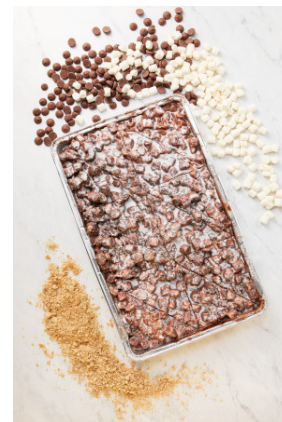
Classic Rocky Road Slice

Classic Rocky Road Slice

PRODUCT DESCRIPTION

Biscuit crumble base with chocolate flavour coating with marshmallow, white Snow topping

| | |
|---------------------------|----------------------------------|
| Brand | CAKE |
| Manufacturer Product Code | 39318 |
| Product Type | Food |
| Product Category | Traybake |
| Storage Type | Frozen |
| Erudus ID | 0654ec6f15ed4872b585f6465958b96b |
| Specification Type | Bakery Products |



Inner Component GTIN 5060268092846

Outer Case GTIN 15060268092843



INGREDIENTS

Ingredient Declaration

Biscuit Crumb (57%) (WHEAT Flour (WHEAT Flour, Calcium Carbonate, Iron, Niacin, Thiamin), Wholemeal WHEAT Flour, Vegetable Oil (Palm, Rapeseed), Sugar, Invert Sugar Syrup, Raising Agents (Sodium Bicarbonate, Ammonium Bicarbonate), Salt), Milk Chocolate Flavour Coating (31%) (Sugar, Palm Oil, Whey Powder (MILK), WHEAT Flour (WHEAT Flour, Calcium Carbonate, Iron, Niacin, Thiamin), Fat Reduced Cocoa Powder, Emulsifiers (SOYA Lecithin, Polyglycerol Polyricinoleate), Flavouring), Invert Sugar Syrup, Margarine (Palm Oil, Rapeseed Oil, Water, Salt, Emulsifier (Distilled Monoglyceride), Natural Vegetable Colours (Annatto Norbixin, Curcumin), Natural Flavouring), Marshmallows (Glucose-fructose Syrup, Sugar, Water, Gelatine, Anti-caking Agent (Maize Starch), Colour (Beetroot Red) Flavouring. Preservatives (SULPHITES)), Dusting Sugar (Dextrose, Cornflour, Palm Oil).

ALLERGENS

Product Contains:

| | |
|--------------------------------------|-------------|
| Celery/Celeriac | No |
| Cereals Containing Gluten | Yes |
| Barley | May Contain |
| Oats | May Contain |
| Rye | No |
| Wheat (including Spelt and Khorasan) | Yes |
| Crustacea | No |
| Eggs | May Contain |
| Fish | No |
| Lupin | No |
| Milk | Yes |
| Molluscs | No |

| | |
|-------------------------------|-------------|
| Mustard | No |
| Nuts (Tree) | May Contain |
| Almond nuts | May Contain |
| Brazil nuts | No |
| Cashew nuts | No |
| Hazelnuts | May Contain |
| Macadamia (Queensland) nuts | No |
| Pecan nuts | No |
| Pistachio nuts | May Contain |
| Walnuts | May Contain |
| Peanuts | No |
| Sesame Seeds | No |
| Soybeans | Yes |
| Sulphur Dioxide and Sulphites | Yes |

Risk Source:

| | |
|------------------------------|------|
| Eggs (Risk Source) | Line |
| Almond nuts (Risk Source) | Line |
| Pistachio nuts (Risk Source) | Line |

| | |
|-------------------------|------|
| Tree Nuts (Risk Source) | Line |
| Hazelnuts (Risk Source) | Line |
| Walnuts (Risk Source) | Line |

Additional Allergen Information

Allergy Advice: For allergens, including cereals containing gluten, see ingredients in bold. May also contain traces of oats, barley, nuts and egg.

SUPPLEMENTARY INGREDIENT INFORMATION

| | |
|--------------------------------|-----|
| Palm Oil | Yes |
| Hydrogenated Vegetable Oil/Fat | No |
| GM Protein/DNA | No |

ADDITIVES

Product Contains:

| | |
|------------------------------|-----|
| Artificial Antioxidants | No |
| Artificial Colours | Yes |
| Artificial Flavour Enhancers | No |

| | |
|--------------------------|-----|
| Artificial Flavourings | Yes |
| Artificial Preservatives | Yes |
| Artificial Sweeteners | No |

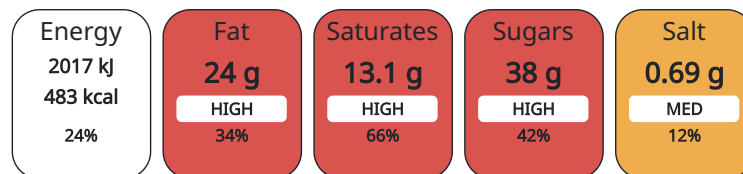
DIET SUITABILITY

| | |
|------------|----|
| Vegan Diet | No |
| Halal Diet | No |

| | |
|-----------------|----|
| Vegetarian Diet | No |
| Kosher Diet | No |

NUTRITIONAL INFORMATION AS SOLD

Each 100g/ml portion contains:



of your reference intake.

Typical values per 100g/ml : Energy 483kcal / 2017kJ

| Nutrient | per 100g | RI per 100g |
|--------------------|----------|-------------|
| Energy (kj) | 2017 kj | 24% |
| Energy (kcal) | 483 kcal | 24% |
| Fat | 24 g | 34% |
| of which Saturates | 13.1 g | 66% |
| Carbohydrate | 61.8 g | 24% |
| of which Sugars | 38 g | 42% |
| Fibre | 1.2 g | |
| Protein | 4.4 g | 9% |
| Salt | 0.69 g | 12% |

HFSS (HIGH IN FAT, SALT AND SUGAR)
HANDLING & STORAGE INFORMATION

| | |
|-------------|-----|
| HFSS Status | Yes |
|-------------|-----|

Directions For Use

Keep frozen until ready to use

Storage Instructions

Storage: Store at -18°C or colder. Defrost for 6 - 8 hours before serving. Ambient: Store in a cool, dry place.

| | |
|------------------------------------|----------|
| Shelf Life from Time of Production | 540 Days |
|------------------------------------|----------|

ACCREDITATIONS/
CERTIFICATIONS/
ASSURANCE
SCHEMES
ORIGIN

| | |
|-----------------|---|
| BRCGS Certified | Roundtable of Sustainable Palm Oil (RSPO) |
|-----------------|---|

| | |
|---------------------------|----------|
| Product Country of Origin | Scotland |
|---------------------------|----------|

| | |
|----------------------------------|----------------|
| Origin of the Primary Ingredient | United Kingdom |
|----------------------------------|----------------|

PRODUCT CHARACTERISTICS

Standards Testing

| | | | |
|---|-----|-----------------------------------|-----|
| Do you undertake trend analysis of microbiological results? | Yes | Is shelf life testing undertaken? | Yes |
|---|-----|-----------------------------------|-----|

CONFIGURATION

Case Configuration Inner Pack Configuration

| | |
|--|----------|
| Total Quantity of Inner Components in Outer Case | 10 Units |
|--|----------|

| | |
|-------------------------------|-----|
| Is the Outer Case Splittable? | Yes |
|-------------------------------|-----|

PRODUCT WEIGHTS

Inner Component

| | |
|-------------------------------|-----|
| Variable Weight Consumer Item | Yes |
|-------------------------------|-----|

| | |
|------------------------|---------|
| Inner Component Weight | 1.17 kg |
|------------------------|---------|

Outer Case

| | |
|-------------------------|----------|
| Outer Case Gross Weight | 12.09 kg |
|-------------------------|----------|

| | |
|-----------------------|---------|
| Outer Case Net Weight | 11.7 kg |
|-----------------------|---------|

PRODUCT DIMENSIONS

Inner Component

| | |
|-----------------------|--------|
| Inner Component Depth | 302 mm |
|-----------------------|--------|

| | |
|-----------------------|--------|
| Inner Component Width | 200 mm |
|-----------------------|--------|

| | |
|------------------------|-------|
| Inner Component Height | 31 mm |
|------------------------|-------|

Outer Case

| | |
|------------------|--------|
| Outer Case Depth | 407 mm |
|------------------|--------|

| | |
|------------------|--------|
| Outer Case Width | 334 mm |
|------------------|--------|

| | |
|-------------------|--------|
| Outer Case Height | 225 mm |
|-------------------|--------|

PALLET
INFORMATION

| | | | |
|---|----------|----------------------|---------|
| Quantity of Cases Per Pallet Layer | 8 Cases | Pallet Height | 1.7 MTR |
| Quantity of Layers Per Pallet | 5 Layers | | |
| Quantity of Cases Per Pallet | 40 Cases | | |

PACKAGING

Inner Component Packaging

| Type | Materials | Weight | Recycled Material % | Recyclable | Returnable | Composite |
|------|-----------------|--------|---------------------|------------|------------|-----------|
| Foil | Plastic | 5 g | | | | |
| Foil | Paper/Cardboard | 1.5 g | | | | |
| Foil | Aluminium | 28.3 g | | | | |

Outer Case Packaging

| Type | Materials | Weight | Recycled Material % | Recyclable | Returnable | Composite |
|------|-----------------|---------|---------------------|------------|------------|-----------|
| Case | Paper/Cardboard | 321.5 g | | | | |

OTHER
INFORMATION

Commodity Code 1905203000

CONTACT
INFORMATION

Address

Lomond Fine Foods Ltd
75 Keppochhill Drive
70 Spiersbridge Road, Thornliebank, Glasgow, G46 7SN
Springburn
Glasgow
G21 1HX
Scotland

P: (Phone) 0141 353 6777

The information on the [Erudus System](#) has been supplied by the manufacturers of the products and, whilst the owners of the Erudus System take steps to ensure the information is regularly updated, they give no warranty and no guarantee that the information is accurate. Product information and ingredients may change, please always read product labels carefully in addition to using the information provided by Erudus.

We do not accept liability for any inaccuracies or incorrect information contained on this site.
Please visit <http://www.erudus.com/terms-and-conditions> for full terms and conditions.