

75415

Coffee and Walnut Cake x 14 portion

75415 Coffee And Walnut Cake

PRODUCT DESCRIPTION

Coffee flavour sponge cake filled and topped with coffee flavour fudge icing finished with walnuts & dark chocolate coffee beans

Brand	CAKE
Manufacturer Product Code	75415
Product Type	Food
Product Category	Cakes and Tarts
Storage Type	Frozen
Erudus ID	ade3c14375174a1c951d13c1873581f3
Specification Type	Bakery Products

Outer Case GTIN 5060268093072



INGREDIENTS

Ingredient Declaration

Sponge Base (Sponge Mix (Sugar, Wheat Flour (**WHEAT** Flour, Calcium Carbonate, Iron, Niacin, Thiamin), Rapeseed Oil, Modified Maize Starch, Whey Powder (**MILK**), Raising Agents (Disodium Pyrophosphate, Sodium Bicarbonate), **WHEAT** Gluten, Potato Starch, Emulsifiers (Sodium Stearoyl Lactate, Polyglycerol Esters of Fatty Acids, Mono- and Diglycerides of Fatty Acids), Salt, Rice Starch, Natural Flavouring, Stabiliser (Guar Gum), Thickener (Cellulose Gum)), Pasteurised Free Range Whole Liquid **EGG**, Rapeseed Oil, Water, **WALNUTS (NUTS)**(2%), Coffee Flavouring), Toffee Fudge Ice (Sugar, Vegetable Oil (Palm Oil, Rapeseed Oil), Water, Dextrose, Fructose, Skimmed **MILK** Powder, Emulsifiers (Sorbitan Tristearate, Mono- and Diglycerides of Fatty Acids), Natural Flavouring, Colour (Caramel), Salt, Preservative (Potassium Sorbate), Coffee Flavouring, **WALNUTS (NUTS)** (0.3%), Dark Chocolate Coffee Beans (2%) (Sugar, Cocoa Mass, Cocoa Butter, Coffee Beans, Emulsifier (Sunflower Lecithin, Flavouring, Glazing Agent (Gum Arabic, Glucose Syrup, Vanilla Extract).

ALLERGENS

Product Contains:

Celery/Celery	No	Mustard	No
Cereals Containing Gluten	Yes	Nuts (Tree)	Yes
Barley	May Contain	Almond nuts	May Contain
Oats	May Contain	Brazil nuts	No
Rye	No	Cashew nuts	No
Wheat (including Spelt and Khorasan)	Yes	Hazelnuts	May Contain
Crustacea	No	Macadamia (Queensland) nuts	No
Eggs	Yes	Pecan nuts	No
Fish	No	Pistachio nuts	May Contain
Lupin	No	Walnuts	Yes
Milk	Yes	Peanuts	No
Molluscs	No	Sesame Seeds	No
		Soybeans	May Contain
		Sulphur Dioxide and Sulphites	May Contain

Risk Source:

Barley (Risk Source)	Line	Oats (Risk Source)	Line
Almond nuts (Risk Source)	Line	Hazelnuts (Risk Source)	Line
Pistachio nuts (Risk Source)	Line	Soybeans (Risk Source)	Line
Sulphur Dioxide and Sulphites (Risk Source)	Line		

Allergen Statement On Pack

Walnut is a Chocking Hazard, not suitable for children less than 3 years of age.

Additional Allergen Information

For allergens, including cereals containing gluten, refer to ingredients in CAPITALS May also contain traces of: oats, barley, soya, sulphites and other tree nuts Walnut is a Chocking Hazard, not suitable for children less than 3 years of age.

SUPPLEMENTARY
INGREDIENT
INFORMATION

Palm Oil	Yes
Hydrogenated Vegetable Oil/Fat	No
GM Protein/DNA	No

ADDITIVES

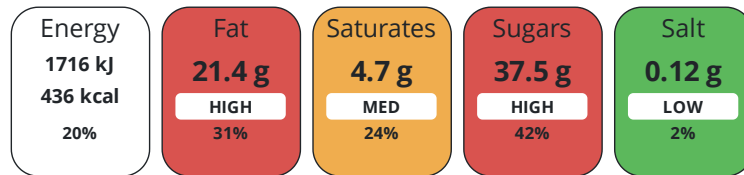
Product Contains:

Artificial Antioxidants	No	Artificial Flavourings	Yes
Artificial Colours	Yes	Artificial Preservatives	Yes
Artificial Flavour Enhancers	No	Artificial Sweeteners	No
Vegan Diet	No	Vegetarian Diet	Suitable for
Halal Diet	No	Kosher Diet	No

DIET
SUITABILITY

NUTRITIONAL
INFORMATION

Each 100g/ml portion contains:



of your reference intake.

Typical values per 100g/ml : Energy 436kcal / 1716kJ

Nutrient	per 100g	RI per 100g
Energy (kJ)	1716 kJ	20%
Energy (kcal)	436 kcal	22%
Fat	21.4 g	31%
of which Saturates	4.7 g	24%
Carbohydrate	49.8 g	19%
of which Sugars	37.5 g	42%
Fibre	0.7 g	
Protein	4.2 g	8%
Salt	0.12 g	2%
Number of Servings	14 Servings	

Source of Nutritional Information Calculation from known/accepted datasets

SUPPLEMENTARY
NUTRITIONAL
INFORMATION

HFSS (HIGH IN FAT, SALT AND SUGAR)

HFSS Status	Yes
HFSS Score	17

HANDLING & STORAGE INFORMATION

Directions For Use

Defrost for 6 - 8 hours before use Once opened store in an airtight container in a cool, dry place Once opened consume within 5 days

Storage Instructions

Keep frozen at -18oC or colder

Storage Instructions After Opening

Coffee flavour sponge cake filled and topped with coffee flavour fudge icing finished with walnuts & dark chocolate coffee beans

Shelf Life from Time of Production	540 Days
Shelf Life From Opening	5 Days
Shelf Life Once Defrosted	5 Days

ACCREDITATIONS/ CERTIFICATIONS/ ASSURANCE SCHEMES ORIGIN

BRCGS Certified	
ISO 45001 (Occupational Health and Safety)	

ISO 14001 (Environmental Management)	
Roundtable of Sustainable Palm Oil (RSPO)	

Product Country of Origin/Place of United Kingdom

Provenance

Additional Origin Details

Produced in Scotland

PRODUCT CHARACTERISTICS

Standards Testing

Do you undertake trend analysis of microbiological results?	Yes
--	-----

Is shelf life testing undertaken?	No
--	----

CONFIGURATION

Case Configuration

Inner Pack Configuration

Total Quantity of Inner Components in Outer Case	1 Units
---	---------

PRODUCT WEIGHTS

Inner Component

Variable Weight Consumer Item	Yes
--------------------------------------	-----

Outer Case

Outer Case Gross Weight	1.72 kg
Outer Case Net Weight	1.61 kg

PRODUCT DIMENSIONS

Inner Component

Inner Component Depth	0 mm
Inner Component Width	0 mm
Inner Component Height	0 mm

Outer Case

Outer Case Depth	240 mm
Outer Case Width	325 mm
Outer Case Height	113 mm

PALLET INFORMATION

Quantity of Cases Per Pallet Layer	20 Cases
Quantity of Layers Per Pallet	12 Layers
Quantity of Cases Per Pallet	240 Cases

Pallet Type	UK Standard Pallet
Pallet Height	1.7 MTR

PACKAGING

Inner Component Packaging

Type	Materials	Weight	Recycled Plastic %	Recyclable	Returnable	Composite
Box	Plastic	3 g	- %			
Box	Paper/Cardboard	105.5 g	- %			

Outer Case Packaging

Type	Materials	Weight	Recycled Plastic %	Recyclable	Returnable	Composite
Case	Plastic	3 g	- %			
Case	Paper/Cardboard	105.5 g	- %			

OTHER INFORMATION

Commodity Code 1905203000

Manufacturer Comments

Product is sold in individual units

CONTACT INFORMATION

Address

Lomond Fine Foods Ltd
75 Keppochhill Drive
70 Spiersbridge Road, Thornliebank, Glasgow, G46 7SN
Springburn
Glasgow
G21 1HX
Scotland

P: (Phone) 0141 353 6777

The information on the [Erudus System](#) has been supplied by the manufacturers of the products and, whilst the owners of the Erudus System take steps to ensure the information is regularly updated, they give no warranty and no guarantee that the information is accurate. Product information and ingredients may change, please always read product labels carefully in addition to using the information provided by Erudus.

We do not accept liability for any inaccuracies or incorrect information contained on this site.
Please visit <http://www.erudus.com/terms-and-conditions> for full terms and conditions.