

Changed Jul 24, 2025 13:59

Reviewed Jul 24, 2025 13:59

Erudus ID 64d92b515fc34b858960bff7be12092c

Version 4.0

Status Published

75487 Pistachio Tiffin 1x15

75487 Pistachio Tiffin 1x15

PRODUCT DESCRIPTION

Pistachio flavoured tiffin base, topped with green coloured white chocolate flavour coating, sprinkled with nibbed pistachios & edible dried rose petals, with a dark chocolate flavour coating swirl.

Brand	CAKE
Manufacturer Product Code	75487
Product Type	Food
Product Category	Traybake
Storage Type	Frozen
Erudus ID	64d92b515fc34b858960bff7be12092c
Specification Type	Bakery Products



Inner Pack GTIN 5060268094529

Outer Case GTIN 15060268094526



INGREDIENTS

Ingredient Declaration

White Chocolate Flavour Topping (Sugar, Vegetable Fats (Palm Kernel, Coconut), Lactose (**MILK**), Skimmed **MILK** Powder, Emulsifier (**SOYA** Lecithin), Flavours), Digestive Biscuit Pieces (Wheat Flour (**WHEAT** Flour, Calcium Carbonate, Iron, Niacin, Thiamin), Wholemeal **WHEAT** Flour, Vegetable Shortening (Palm Oil, Rapeseed Oil), Sugar, Partially Invert Sugar Syrup, Raising Agents (Sodium Bicarbonate, Ammonium Bicarbonate), Salt), Biscuit Crumb (Wheat Flour (**WHEAT** Flour, Calcium Carbonate, Iron, Niacin, Thiamin), Wholemeal **WHEAT** Flour, Vegetable Oils (Palm Oil, Rapeseed Oil), Sugar, Partially Inverted Sugar Syrup, Raising Agents (Sodium Bicarbonate, Ammonium Bicarbonate), Salt), Milk Chocolate Flavour Topping (Sugar, Vegetable Fats (Palm Kernel, Palm), Whey Powder (**MILK**), Wheat Flour (**WHEAT** Flour, Calcium Carbonate, Niacin, Iron, Thiamin), Fat Reduced Cocoa Powder, Emulsifier (**SOYA** Lecithin, Polyglycerol Polyricinoleate), Natural Flavouring), Margarine (Palm Oil, Rapeseed Oil, Water, Salt, Emulsifier (Mono- and Diglycerides of Fatty Acids), Flavouring, Colours (Annatto Bixin, Curcumin)), Invert Sugar Syrup, Dark Chocolate Coating (Sugar, Vegetable Fat (Palm Kernel, Coconut), Low Fat Cocoa Powder, Emulsifier (**SOYA** Lecithin), Flavours), Nibbed **PISTACHIO (NUTS)** (1.5%), Green Colouring, Pistachio Flavouring, Edible Dried Ruby Rose Petals (0.2%).

Ingredient Statements

Pistachio Pieces - Choking hazard, not suitable for children less than 3 years of age

ALLERGENS

Product Contains:

Celery/Celeriac	No	Mustard	No
Cereals Containing Gluten	Yes	Nuts (Tree)	Yes
Barley	May Contain	Almond nuts	May Contain
Oats	May Contain	Brazil nuts	No
Rye	No	Cashew nuts	No
Wheat (including Spelt and Khorasan)	Yes	Hazelnuts	May Contain
Crustacea	No	Macadamia (Queensland) nuts	No
Eggs	May Contain	Pecan nuts	No
Fish	No	Pistachio nuts	Yes
Lupin	No	Walnuts	May Contain
Milk	Yes	Peanuts	No
Molluscs	No	Sesame Seeds	No
		Soybeans	Yes
		Sulphur Dioxide and Sulphites	May Contain

Risk Source:

Barley (Risk Source)	Line	Oats (Risk Source)	Line
Eggs (Risk Source)	Line	Almond nuts (Risk Source)	Line
Hazelnuts (Risk Source)	Line	Walnuts (Risk Source)	Line
Sulphur Dioxide and Sulphites (Risk Source)	Line		

Allergen Statement On Pack

Pistachio Pieces - Choking hazard, not suitable for children less than 3 years of age

Additional Allergen Information

Allergy Advice: For allergens, including cereals containing gluten, see ingredients in bold. May also contain traces of gluten (oats, barley), eggs, sulphites and other tree nuts

SUPPLEMENTARY INGREDIENT INFORMATION

Palm Oil	Yes
Hydrogenated Vegetable Oil/Fat	No
GM Protein/DNA	No

ADDITIVES

Product Contains:

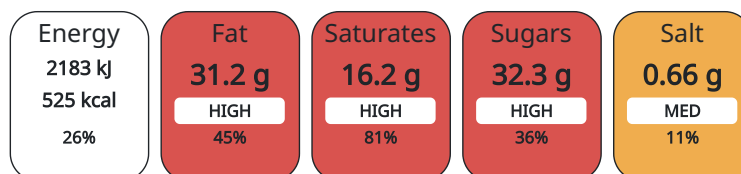
Artificial Antioxidants	No	Artificial Flavourings	No
Artificial Colours	Yes	Artificial Preservatives	Yes
Artificial Flavour Enhancers	No	Artificial Sweeteners	No

DIET SUITABILITY

Vegan Diet	No	Vegetarian Diet	Suitable for
Halal Diet	No	Kosher Diet	No

NUTRITIONAL INFORMATION AS SOLD

Each 100g/ml portion contains:



of your reference intake.

Typical values per 100g/ml : Energy 525kcal / 2183kJ

Nutrient	per 100g	RI per 100g	per 78g serving	RI per 78g serving
Energy (kJ)	2183 kJ	26%	1702.74	20%
Energy (kcal)	525 kcal	26%	409.5	20%
Fat	31.2 g	45%	24.34 g	35%
of which Saturates	16.2 g	81%	12.64 g	63%
Carbohydrate	55.9 g	22%	43.6 g	17%
of which Sugars	32.3 g	36%	25.19 g	28%
Fibre	1.4 g		1.09 g	
Protein	4.5 g	9%	3.51 g	7%
Salt	0.66 g	11%	0.51 g	9%
Serving Size 78 g				
Number of Servings 1 Servings				

SUPPLEMENTARY NUTRITIONAL INFORMATION

HFSS (HIGH IN FAT, SALT AND SUGAR)

HFSS Status	Yes
HFSS Score	18

HANDLING & STORAGE INFORMATION

Directions For Use

Storage: Store at -18°C or colder.

Storage Instructions

Storage: Store at -18°C or colder. Defrost for 6 - 8 hours before serving. Ambient: Store in a cool, dry place. Ambient: Store in a cool, dry place.

Storage Instructions After Opening

Ambient: Store in a cool, dry place.

Shelf Life from Time of Production 540 Days

Shelf Life From Opening 5 Days

ACCREDITATIONS/ CERTIFICATIONS/ ASSURANCE SCHEMES ORIGIN

BRCGS Certified

ISO 14001 (Environmental Management)

Roundtable of Sustainable Palm Oil (RSPO)

Product Country of Origin Scotland

Additional Origin Details

Produced in Scotland

Origin of the Primary Ingredient United Kingdom

PRODUCT CHARACTERISTICS

Standards Testing

Do you undertake trend analysis of microbiological results? Yes

Is shelf life testing undertaken? No

CONFIGURATION

Case Configuration

Variable Inner Components in Outer Case Yes

Inner Pack Configuration

Total Quantity of Inner Components in Outer Case 10 Units

Is Inner Pack Splittable? No

Total Quantity of Inner Packs in Outer Case 10 Units

Quantity of Inner Components in Inner Pack 15

Case

Is the Outer Case Splittable? No

Count per Inner Component 15

PRODUCT WEIGHTS

Inner Component

Variable Weight Consumer Item	Yes
Inner Component Weight	1.17 kg
e mark	No

Outer Case

Outer Case Gross Weight	12.56 kg
Outer Case Net Weight	11.69 kg

Inner Pack

Inner Pack Gross Weight	1199 g
Inner Pack Net Weight	1169 g

PRODUCT DIMENSIONS

Inner Component

Inner Component Depth	323 mm
Inner Component Width	201 mm
Inner Component Height	30 mm

Inner Pack

Inner Pack Depth	323 mm
Inner Pack Width	201 mm
Inner Pack Height	30 mm

Outer Case

Outer Case Depth	380 mm
Outer Case Width	220 mm
Outer Case Height	350 mm

PALLET INFORMATION

Quantity of Cases Per Pallet Layer	8 Cases
Quantity of Layers Per Pallet	5 Layers
Quantity of Cases Per Pallet	40 Cases

Pallet Height	1.7 MTR
---------------	---------

PACKAGING

Inner Component Packaging

Type	Materials	Weight	Recycled Material %	Recyclable	Returnable	Composite
Foil	Paper/Cardboard	7 g				
Foil	Aluminium	22 g				
Label	Paper/Cardboard	1 g				

Outer Case Packaging

Type	Materials	Weight	Recycled Material %	Recyclable	Returnable	Composite
Case	Paper/Cardboard	346 g				
Label	Paper/Cardboard	1 g				

SAFETY & WARNINGS

SUSTAINABILITY

OTHER INFORMATION

Commodity Code	1905203000
----------------	------------

Manufacturer Comments

1x15 portions per tray, 10 trays per case

CONTACT INFORMATION

Address

Lomond Fine Foods Ltd
 75 Keppochhill Drive
 70 Spiersbridge Road, Thornliebank, Glasgow, G46 7SN
 Springburn
 Glasgow
 G21 1HX
 Scotland

P: (Phone) 0141 353 6777

The information on the [Erudus System](#) has been supplied by the manufacturers of the products and, whilst the owners of the Erudus System take steps to ensure the information is regularly updated, they give no warranty and no guarantee that the information is accurate. Product information and ingredients may change, please always read product labels carefully in addition to using the information provided by Erudus.

We do not accept liability for any inaccuracies or incorrect information contained on this site.
Please visit <http://www.erudus.com/terms-and-conditions> for full terms and conditions.