

Changed May 16, 2025 09:24

Reviewed May 16, 2025 09:24

Erudus ID 7e25b8efba4a424d9a45c6e6422ddf68

Version 4.0

Status Published

# Biscoff Rocky Road 1x15

Biscoff Rocky Road Slice

## PRODUCT DESCRIPTION

Marshmallow and biscuit base flavored with Biscoff paste and white chocolate flavoured coating. Topped with Biscoff spread and biscoff crumb.

Brand	CAKE
Manufacturer Product Code	50176
Product Type	Food
Product Category	Traybake
Storage Type	Frozen
Erudus ID	7e25b8efba4a424d9a45c6e6422ddf68
Specification Type	Bakery Products



Inner Component GTIN	5060268093386
Outer Case GTIN	15060268093376



## INGREDIENTS

### Ingredient Declaration

White Chocolate Flavour Coating (42%) (Sugar, Vegetable Fats (Palm Kernel, Coconut), Lactose (MILK), Skimmed MILK Powder, Emulsifier (SOYA Lecithin), Flavours), Digestive Biscuits (Wheat Flour (WHEAT Flour, Calcium Carbonate, Iron, Niacin, Thiamin), Wholemeal WHEAT Flour, Vegetable Shortening (Palm Oil, Rapeseed Oil), Sugar, Partially Invert Sugar Syrup, Raising Agents (Sodium Bicarbonate, Ammonium Bicarbonate), Salt), Biscoff Biscuits and Biscoff Spread (25%) (Caramelised Biscuits (WHEAT Flour, Sugar, Vegetable Oils (Palm, Rapeseed), Candy Sugar Syrup, Raising Agent (Sodium Hydrogen Carbonate), SOYA Flour, Salt, Cinnamon), Vegetable Oil (Rapeseed), Sugar, Emulsifier (SOYA Lecithin), Citric Acid), Marshmallows (7%) (Glucose-Fructose Syrup (SULPHITES), Sugar, Water, Gelatine, Maize Starch, Dextrose, Vanilla Flavouring, Colour (Beetroot Red)), Margarine (Vegetable Oils (Palm, Rapeseed), Water, Salt, Emulsifier (Mono and Diglycerides of Fatty Acids), Colours (Annatto Bixin, Curcumin)).

## ALLERGENS

Product Contains:

Celery/Celeriac	No	Mustard	No
Cereals Containing Gluten	Yes	Nuts (Tree)	May Contain
Barley	May Contain	Almond nuts	May Contain
Oats	May Contain	Brazil nuts	No
Rye	No	Cashew nuts	No
Wheat (including Spelt and Khorasan)	Yes	Hazelnuts	May Contain
Crustacea	No	Macadamia (Queensland) nuts	No
Eggs	May Contain	Pecan nuts	No
Fish	No	Pistachio nuts	May Contain
Lupin	No	Walnuts	May Contain
Milk	Yes	Peanuts	No
Molluscs	No	Sesame Seeds	No
		Soybeans	Yes
		Sulphur Dioxide and Sulphites	Yes

*Risk Source:*

<b>Barley (Risk Source)</b>	Line	<b>Oats (Risk Source)</b>	Line
<b>Eggs (Risk Source)</b>	Line	<b>Tree Nuts (Risk Source)</b>	Line
<b>Almond nuts (Risk Source)</b>	Line	<b>Hazelnuts (Risk Source)</b>	Line
<b>Pistachio nuts (Risk Source)</b>	Line	<b>Walnuts (Risk Source)</b>	Line

**Additional Allergen Information**

Allergy Advice: For allergens, including cereals containing gluten, see ingredients in bold. May also contain traces of oats, barley, egg and tree nuts

SUPPLEMENTARY  
INGREDIENT  
INFORMATION

<b>Palm Oil</b>	Yes
<b>Hydrogenated Vegetable Oil/Fat</b>	No
<b>GM Protein/DNA</b>	No

ADDITIVES

*Product Contains:*

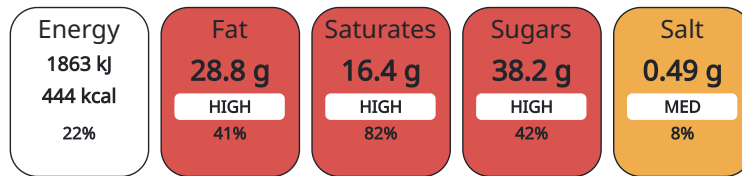
<b>Artificial Antioxidants</b>	No	<b>Artificial Flavourings</b>	Yes
<b>Artificial Colours</b>	Yes	<b>Artificial Preservatives</b>	Yes
<b>Artificial Flavour Enhancers</b>	No	<b>Artificial Sweeteners</b>	No

DIET SUITABILITY

<b>Vegan Diet</b>	No	<b>Vegetarian Diet</b>	No
<b>Halal Diet</b>	No	<b>Kosher Diet</b>	No

NUTRITIONAL  
INFORMATION AS  
SOLD

Each 100g/ml portion contains:



of your reference intake.

Typical values per 100g/ml : Energy 444kcal / 1863kJ

Nutrient	per 100g	RI per 100g
<b>Energy (kJ)</b>	1863 kJ	22%
<b>Energy (kcal)</b>	444 kcal	22%
<b>Fat</b>	28.8 g	41%
of which Saturates	16.4 g	82%
<b>Carbohydrate</b>	62 g	24%
of which Sugars	38.2 g	42%
<b>Fibre</b>	0.2 g	
<b>Protein</b>	4.1 g	8%
<b>Salt</b>	0.49 g	8%

SUPPLEMENTARY  
NUTRITIONAL  
INFORMATION

HFSS (HIGH IN  
FAT, SALT AND  
SUGAR)

<b>HFSS Status</b>	Yes
--------------------	-----

HANDLING &  
STORAGE  
INFORMATION

**Directions For Use**

Keep frozen until ready to use

**Storage Instructions**

Storage: Store at -18°C or colder. Defrost for 6 - 8 hours before serving. Ambient: Store in a cool, dry place.

**Shelf Life from Time of Production** 540 Days

ACCREDITATIONS/  
CERTIFICATIONS/  
ASSURANCE  
SCHEMES  
ORIGIN

**BRCGS Certified**

**Roundtable of Sustainable Palm Oil (RSPO)**

**Product Country of Origin** Scotland

**Origin of the Primary Ingredient** United Kingdom

PRODUCT  
CHARACTERISTICS

Standards Testing

**Do you undertake trend analysis of microbiological results?** Yes

**Is shelf life testing undertaken?** Yes

Microbiological Standards

Organism	Description	Frequency	Target	Maximum	Sample (g or ml)
Enterobacteriaceae (cfu/g or ml)		Occasionally	<10	100	100
Listeria SPP (cfu/g or ml)		Occasionally	<0	100	100
Staphylococcus Aureus (cfu/g or ml)	Reject if present	Occasionally	<0	0	100
Salmonella (cfu/g or ml)	Reject if present	Occasionally	<0	0	100
Yeast (cfu/g or ml)		Occasionally	<100	10000	100
Moulds (cfu/g or ml)		Occasionally	<100	10000	100
Aerobic Colony Count (ACC) (cfu/g or ml)		Occasionally	<1000	10000	100
Enterobacter Sakazakii (cfu/g or ml)		Occasionally	<0	10	100

CONFIGURATION

Case Configuration

Inner Pack Configuration

**Total Quantity of Inner Components in Outer Case** 10 Units

**Is the Outer Case Splittable?** Yes

PRODUCT  
WEIGHTS

Inner Component

**Variable Weight Consumer Item** Yes

**Inner Component Weight** 1.27 kg

Outer Case

**Outer Case Gross Weight** 13.04 kg

**Outer Case Net Weight** 12.7 kg

PRODUCT  
DIMENSIONS

Inner Component

**Inner Component Depth** 302 mm

**Inner Component Width** 200 mm

**Inner Component Height** 31 mm

Outer Case

**Outer Case Depth** 407 mm

**Outer Case Width** 334 mm

**Outer Case Height** 225 mm

PALLET  
INFORMATION

<b>Quantity of Cases Per Pallet Layer</b>	8 Cases	<b>Pallet Height</b>	1.7 MTR
<b>Quantity of Layers Per Pallet</b>	5 Layers		
<b>Quantity of Cases Per Pallet</b>	40 Cases		

PACKAGING

Inner Component Packaging

Type	Materials	Weight	Recycled Material %	Recyclable	Returnable	Composite
Foil	Plastic	5 g				
Foil	Paper/Cardboard	1.5 g				
Foil	Aluminium	28.3 g				

Outer Case Packaging

Type	Materials	Weight	Recycled Material %	Recyclable	Returnable	Composite
Case	Paper/Cardboard	140 g				

SAFETY &  
WARNINGS

SUSTAINABILITY

OTHER  
INFORMATION

**Commodity Code** 1905203000

CONTACT  
INFORMATION

Address

Lomond Fine Foods Ltd  
75 Keppochhill Drive  
70 Spiersbridge Road, Thornliebank, Glasgow, G46 7SN  
Springburn  
Glasgow  
G21 1HX  
Scotland

**P: (Phone)** 0141 353 6777

The information on the [Erudus System](#) has been supplied by the manufacturers of the products and, whilst the owners of the Erudus System take steps to ensure the information is regularly updated, they give no warranty and no guarantee that the information is accurate. Product information and ingredients may change, please always read product labels carefully in addition to using the information provided by Erudus.

We do not accept liability for any inaccuracies or incorrect information contained on this site.  
Please visit <http://www.erudus.com/terms-and-conditions> for full terms and conditions.