

Changed Jul 04, 2024 13:14

Reviewed Jul 04, 2024 13:14

Erudus ID 4b38b46f1d0a4f279558eaef14612bac

Version 2.0

12009

Ultimate Brownie 1 x 30 Slices

Brownie 1x30

PRODUCT DESCRIPTION

Soft eating chocolate brownie with white chocolate pieces

Brand	CAKE
Manufacturer Product Code	12009
Product Type	Food
Product Category	Other Bakery Products
Storage Type	Frozen
Erudus ID	4b38b46f1d0a4f279558eaef14612bac
Specification Type	Bakery Products
Outer Case GTIN	5060268091054



INGREDIENTS

Ingredient Declaration

Dark Chocolate (23%) (Cocoa Mass, Sugar, Cocoa Butter, Emulsifier - SOYA Lecithin; Natural Vanilla Flavouring), Caster Sugar, Butter (MILK, Salt), Pasteurised Whole Free Range EGG, White Chocolate Pieces (10%) (Sugar, Whole MILK Powder, Cocoa Butter, Emulsifier (SOYA Lecithin), Natural Vanilla Flavouring), WHEAT Flour (WHEAT Flour, Calcium, Iron, Niacin, Thiamin), Vanilla Flavouring.

ALLERGENS

Product Contains:

Celery/Celeriac	No	Mustard	No
Cereals Containing Gluten	Yes	Nuts (Tree)	May Contain
Barley	May Contain	Almond nuts	May Contain
Oats	May Contain	Brazil nuts	No
Rye	No	Cashew nuts	No
Wheat (including Spelt and Khorasan)	Yes	Hazelnuts	May Contain
Crustacea	No	Macadamia (Queensland) nuts	No
Eggs	Yes	Pecan nuts	No
Fish	No	Pistachio nuts	May Contain
Lupin	No	Walnuts	May Contain
Milk	Yes	Peanuts	No
Molluscs	No	Sesame Seeds	No
		Soybeans	Yes
		Sulphur Dioxide and Sulphites	May Contain

Risk Source:

Barley (Risk Source)	Line	Oats (Risk Source)	Line
Tree Nuts (Risk Source)	Line	Almond nuts (Risk Source)	Line
Hazelnuts (Risk Source)	Line	Pistachio nuts (Risk Source)	Line
Walnuts (Risk Source)	Line	Sulphur Dioxide and Sulphites (Risk Source)	Line

Additional Allergen Information

For allergens, including cereals containing gluten, see ingredients in CAPITALS May contain traces of: oats, barley, tree nuts, sulphites

SUPPLEMENTARY INGREDIENT INFORMATION

Palm Oil	No
Hydrogenated Vegetable Oil/Fat	No
GM Protein/DNA	No

ADDITIVES

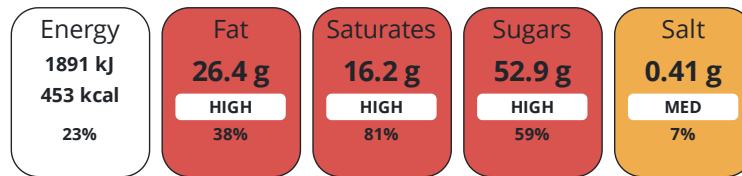
Product Contains:

Artificial Antioxidants	No	Artificial Flavourings	No
Artificial Colours	No	Artificial Preservatives	No
Artificial Flavour Enhancers	No	Artificial Sweeteners	No
Vegan Diet	No	Vegetarian Diet	Suitable for
Halal Diet	No	Kosher Diet	No

DIET SUITABILITY

NUTRITIONAL INFORMATION

Each 100g/ml portion contains:



of your reference intake.

Typical values per 100g/ml : Energy 453kcal / 1891kJ

Nutrient	per 100g	RI per 100g	per 71g serving	RI per 71g serving
Energy (kJ)	1891 kJ	23%	1342.6 kJ	16%
Energy (kcal)	453 kcal	23%	321.6 kcal	16%
Fat	26.4 g	38%	18.7 g	27%
of which Saturates	16.2 g	81%	11.5 g	58%
Carbohydrate	63.6 g	24%	45.2 g	17%
of which Sugars	52.9 g	59%	37.6 g	42%
Fibre	2.4 g		1.7 g	
Protein	5.3 g	11%	3.8 g	8%
Salt	0.41 g	7%	0.3 g	5%

Serving Size 71 g

SUPPLEMENTARY NUTRITIONAL INFORMATION

HFSS (HIGH IN FAT, SALT AND SUGAR) HANDLING & STORAGE INFORMATION

HFSS Status Yes

Directions For Use

Defrost for 6 - 8 hours before use Once opened store in an airtight container in a cool, dry place Consume within 5 days of defrost

Storage Instructions

Keep frozen at -18oC or colder

Shelf Life from Time of Production 540 Days

ACCREDITATIONS/
CERTIFICATIONS/
ASSURANCE
SCHEMES
ORIGIN

BRCGS Certified

Roundtable of Sustainable Palm Oil (RSPO)

Product Country of Origin/Place of United Kingdom

Provenance

Additional Origin Details

Produced in Scotland

PRODUCT
CHARACTERISTICS

Standards Testing

Do you undertake trend analysis of microbiological results? Yes

Is shelf life testing undertaken? No

CONFIGURATION

Case Configuration

Inner Pack Configuration

Total Quantity of Inner Components in Outer Case 1 Units

Count per Inner Component 30

PRODUCT
WEIGHTS

Inner Component

Variable Weight Consumer Item No

Outer Case

Outer Case Gross Weight 2.47 kg

Outer Case Net Weight 2.13 kg

PRODUCT
DIMENSIONS

Inner Component

Inner Component Depth 0 mm

Inner Component Width 0 mm

Inner Component Height 0 mm

Outer Case

Outer Case Depth 210 mm

Outer Case Width 280 mm

Outer Case Height 60 mm

PALLET
INFORMATION

Quantity of Cases Per Pallet Layer 17 Cases

Pallet Height 1.5 MTR

Quantity of Layers Per Pallet 12 Layers

Quantity of Cases Per Pallet 204 Cases

PACKAGING

Inner Component Packaging

Type	Materials	Weight	Recycled Plastic %	Recyclable	Returnable	Composite
Box	Paper/Cardboard	151.5 g	- %			

Outer Case Packaging

Type	Materials	Weight	Recycled Plastic %	Recyclable	Returnable	Composite
Case	Plastic	5 g	- %			
Case	Paper/Cardboard	151.5 g	- %			

OTHER
INFORMATION

Commodity Code 1905203000

Manufacturer Comments

Product is sold as single units each box containing 30 slices

CONTACT
INFORMATION

Address

Lomond Fine Foods Ltd
75 Keppochhill Drive
70 Spiersbridge Road, Thornliebank, Glasgow, G46 7SN
Springburn
Glasgow
G21 1HX
Scotland

P: (Phone) 0141 353 6777

The information on the [Erudus System](#) has been supplied by the manufacturers of the products and, whilst the owners of the Erudus System take steps to ensure the information is regularly updated, they give no warranty and no guarantee that the information is accurate. Product information and ingredients may change, please always read product labels carefully in addition to using the information provided by Erudus.

We do not accept liability for any inaccuracies or incorrect information contained on this site.
Please visit <http://www.erudus.com/terms-and-conditions> for full terms and conditions.