

Changed Jul 05, 2024 09:01

Reviewed Jul 05, 2024 09:01

Erudus ID cb3cd0effdad49e297cd532337c7828e

Version 2.0

14437

# Christmas Mincemeat Pie Slice x 15ptn

Christmas Mincemeat Pie Slice

## PRODUCT DESCRIPTION

Short crust pastry base layered with sweet mincemeat and topped with short crust pastry stars with dusting sugar

Brand	CAKE
Manufacturer Product Code	14437
Product Type	Food
Product Category	Traybake
Storage Type	Frozen
Erudus ID	cb3cd0effdad49e297cd532337c7828e
Specification Type	Bakery Products
Inner Component GTIN	5060268092044
Outer Case GTIN	15060268092041



## INGREDIENTS

### Ingredient Declaration

Wheat Flour (WHEAT Flour (WHEAT Flour, Calcium Carbonate, Iron, Nicotinamide, Thiamine)), Sultanas, Currants, Butter (MILK, Salt), Mincemeat (9.4%) (Sugar, Vine Fruit (30%) (Sultanas, Raisins with glazing agent (Sunflower Oil)), Apples (SULPHITES) (18%), Apple Puree (SULPHITES) (9%), Water, Vegetable Suet (Palm Oil, Rapeseed Oil, Sunflower Oil, Rice Flour), Starch, Cut Mixed Peel (SULPHITES) (Glucose-Fructose Syrup, Orange Peel, Lemon Peel, Citric Acid), Mixed Spice (0.5%) (Coriander, Cassia, Cinnamon, Ginger, Cardamom, Cloves, Fennel, Nutmeg), Acidity Regulator (Acetic Acid), Colour (Ammonia Caramel), Preservatives (Potassium Sorbate), Flavouring, Cinnamon), Water, Golden Syrup, Caster Sugar, Light Brown Sugar, Mixed Spice (Cinnamon, Coriander, Ginger, Allspice, Nutmeg, Cloves), Sweet Snow Topping (0.1%) (Dextrose, WHEAT Starch, Vegetable Oils (Palm, Rapeseed)).

## ALLERGENS

Product Contains:

<b>Celery/Celery</b>	No	<b>Mustard</b>	No
<b>Cereals Containing Gluten</b>	Yes	<b>Nuts (Tree)</b>	May Contain
<b>Barley</b>	May Contain	<b>Almond nuts</b>	May Contain
<b>Oats</b>	May Contain	<b>Brazil nuts</b>	No
<b>Rye</b>	No	<b>Cashew nuts</b>	No
<b>Wheat (including Spelt and Khorasan)</b>	Yes	<b>Hazelnuts</b>	May Contain
<b>Crustacea</b>	No	<b>Macadamia (Queensland) nuts</b>	No
<b>Eggs</b>	May Contain	<b>Pecan nuts</b>	No
<b>Fish</b>	No	<b>Pistachio nuts</b>	May Contain
<b>Lupin</b>	No	<b>Walnuts</b>	May Contain
<b>Milk</b>	Yes	<b>Peanuts</b>	No
<b>Molluscs</b>	No	<b>Sesame Seeds</b>	No
		<b>Soybeans</b>	May Contain
		<b>Sulphur Dioxide and Sulphites</b>	Yes

Risk Source:

<b>Barley (Risk Source)</b>	Line	<b>Oats (Risk Source)</b>	Line
<b>Eggs (Risk Source)</b>	Line	<b>Tree Nuts (Risk Source)</b>	Line
<b>Almond nuts (Risk Source)</b>	Line	<b>Hazelnuts (Risk Source)</b>	Line
<b>Pistachio nuts (Risk Source)</b>	Line	<b>Walnuts (Risk Source)</b>	Line
<b>Soybeans (Risk Source)</b>	Line		

#### Additional Allergen Information

Allergy Advice: For allergens, including cereals containing gluten, see ingredients in bold. May also contain traces of Oats, Barley, Tree Nuts, Eggs, Soya

SUPPLEMENTARY  
INGREDIENT  
INFORMATION

<b>Palm Oil</b>	Yes
<b>Hydrogenated Vegetable Oil/Fat</b>	No
<b>GM Protein/DNA</b>	No

ADDITIVES

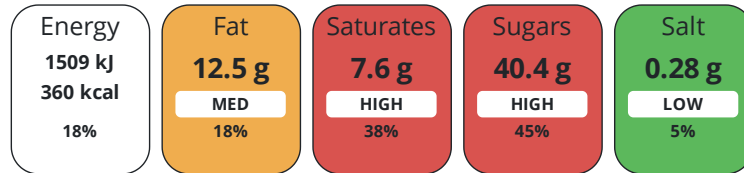
Product Contains:

<b>Artificial Antioxidants</b>	No	<b>Artificial Flavourings</b>	No
<b>Artificial Colours</b>	No	<b>Artificial Preservatives</b>	Yes
<b>Artificial Flavour Enhancers</b>	No	<b>Artificial Sweeteners</b>	No
<b>Vegan Diet</b>	No	<b>Vegetarian Diet</b>	Suitable for
<b>Halal Diet</b>	No	<b>Kosher Diet</b>	No

DIET  
SUITABILITY

NUTRITIONAL  
INFORMATION

Each 100g/ml portion contains:



of your reference intake.

Typical values per 100g/ml : Energy 360kcal / 1509kJ

Nutrient	per 100g	RI per 100g
<b>Energy (kJ)</b>	1509 kJ	18%
<b>Energy (kcal)</b>	360 kcal	18%
<b>Fat</b>	12.5 g	18%
of which Saturates	7.6 g	38%
<b>Carbohydrate</b>	57.5 g	22%
of which Sugars	40.4 g	45%
<b>Fibre</b>	3.2 g	
<b>Protein</b>	3.4 g	7%
<b>Salt</b>	0.28 g	5%

SUPPLEMENTARY  
NUTRITIONAL  
INFORMATION

HFSS (HIGH IN  
FAT, SALT AND  
SUGAR)

<b>HFSS Status</b>	Yes
--------------------	-----

HANDLING & STORAGE INFORMATION

**Directions For Use**

Keep frozen until ready to defrost

**Storage Instructions**

Storage: Store at -18°C or colder. Defrost for 6 - 8 hours before serving. Store unopened in a cool dry place for up to 90 days. Eat within 5 days of opening.

**Shelf Life from Time of Production** 540 Days

ACCREDITATIONS/ CERTIFICATIONS/ ASSURANCE SCHEMES ORIGIN

**BRCGS Certified**

**Roundtable of Sustainable Palm Oil (RSPO)**

**Product Country of Origin/Place of Provenance** Scotland

PRODUCT CHARACTERISTICS

Standards Testing

**Do you undertake trend analysis of microbiological results?** Yes

**Is shelf life testing undertaken?** Yes

CONFIGURATION

Case Configuration

Inner Pack Configuration

**Total Quantity of Inner Components in Outer Case** 10 Units

PRODUCT WEIGHTS

Inner Component

**Variable Weight Consumer Item** Yes

Outer Case

**Outer Case Gross Weight** 12.6 kg

**Outer Case Net Weight** 12 kg

PRODUCT DIMENSIONS

Inner Component

**Inner Component Depth** 323 mm

**Inner Component Width** 201 mm

**Inner Component Height** 30 mm

Outer Case

**Outer Case Depth** 380 mm

**Outer Case Width** 340 mm

**Outer Case Height** 350 mm

PALLET INFORMATION

**Quantity of Cases Per Pallet Layer** 8 Cases

**Pallet Height** 1.7 MTR

**Quantity of Layers Per Pallet** 5 Layers

**Quantity of Cases Per Pallet** 40 Cases

PACKAGING

Inner Component Packaging

Type	Materials	Weight	Recycled Plastic %	Recyclable	Returnable	Composite
Foil	Plastic	5 g	- %			
Foil	Paper/Cardboard	1.5 g	- %			
Foil	Aluminium	28.3 g	- %			

Outer Case Packaging

Type	Materials	Weight	Recycled Plastic %	Recyclable	Returnable	Composite
Case	Paper/Cardboard	321.5 g	- %			

OTHER INFORMATION

**Commodity Code** 1905203000

CONTACT  
INFORMATION

Address

Lomond Fine Foods Ltd  
75 Keppochhill Drive  
70 Spiersbridge Road, Thornliebank, Glasgow, G46 7SN  
Springburn  
Glasgow  
G21 1HX  
Scotland

P: (Phone) 0141 353 6777

The information on the [Erudus System](#) has been supplied by the manufacturers of the products and, whilst the owners of the Erudus System take steps to ensure the information is regularly updated, they give no warranty and no guarantee that the information is accurate. Product information and ingredients may change, please always read product labels carefully in addition to using the information provided by Erudus.

We do not accept liability for any inaccuracies or incorrect information contained on this site.  
Please visit <http://www.erudus.com/terms-and-conditions> for full terms and conditions.