

Changed Apr 15, 2025 15:05

Reviewed Apr 15, 2025 15:05

Erudus ID 0257ef39509d4277812bb7f4eadc9f8c

Version 2.1

Status Published

Flower Shaped Shortbread Biscuits 1x12

Flower Shaped Shortbread Biscuits 1x12

PRODUCT DESCRIPTION

A generous helping of mixed fruit filling, sandwiched between two shortbread flower shaped biscuits, topped with a layer of dusting sugar

Brand	CAKE
Manufacturer Product Code	12505
Product Type	Food
Product Category	Biscuits, Wafers and Crackers
Storage Type	Frozen
Erudus ID	0257ef39509d4277812bb7f4eadc9f8c
Specification Type	Bakery Products



Outer Case GTIN 5060268094468



INGREDIENTS

Ingredient Declaration

Wheat Flour (**WHEAT** Flour, Calcium Carbonate, Iron, Niacin, Thiamin), Butter (Cream (**MILK**), Salt, Water), Mixed Fruit Filling (Glucose Syrup, Sugar, Apple Purée, Plum Purée, Apricot Purée, Colour (Anthocyanin) (Preservative (Potassium Sorbate)), Acidity Regulators (Citric Acid, Trisodium Citrate), Gelling Agent (Pectin), Natural Flavour),Caster Sugar, Dusting Sugar (Dextrose, Cornflour, Palm Oil).

Ingredient Statements

Allergy Advice: For allergens, including cereals containing gluten, see ingredients in bold. May also contain traces of: oats, barley, soya,egg, sulphites and tree nuts.

ALLERGENS

Product Contains:

Celery/Celeriac	No
Cereals Containing Gluten	Yes
Barley	May Contain
Oats	May Contain
Rye	No
Wheat (including Spelt and Khorasan)	Yes
Crustacea	No
Eggs	May Contain
Fish	No
Lupin	No
Milk	Yes
Molluscs	No

Mustard	No
Nuts (Tree)	May Contain
Almond nuts	May Contain
Brazil nuts	No
Cashew nuts	No
Hazelnuts	May Contain
Macadamia (Queensland) nuts	No
Pecan nuts	No
Pistachio nuts	May Contain
Walnuts	May Contain
Peanuts	No
Sesame Seeds	No
Soybeans	May Contain
Sulphur Dioxide and Sulphites	May Contain

Risk Source:

Barley (Risk Source)	Line	Oats (Risk Source)	Line
Eggs (Risk Source)	Line	Tree Nuts (Risk Source)	Line
Almond nuts (Risk Source)	Line	Hazelnuts (Risk Source)	Line
Pistachio nuts (Risk Source)	Line	Walnuts (Risk Source)	Line
Soybeans (Risk Source)	Line	Sulphur Dioxide and Sulphites (Risk Source)	Line

Allergen Statement On Pack

Allergy Advice: For allergens, including cereals containing gluten, see ingredients in bold. May also contain traces of: oats, barley, soya,egg, sulphites and tree nuts.

SUPPLEMENTARY INGREDIENT INFORMATION

Palm Oil	Yes
Hydrogenated Vegetable Oil/Fat	No
GM Protein/DNA	No

ADDITIVES

Product Contains:

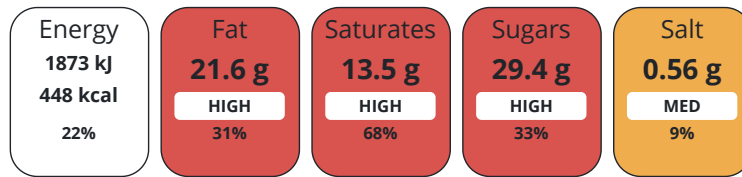
Artificial Antioxidants	No	Artificial Flavourings	Yes
Artificial Colours	Yes	Artificial Preservatives	Yes
Artificial Flavour Enhancers	No	Artificial Sweeteners	No

DIET SUITABILITY

Vegan Diet	No	Vegetarian Diet	Suitable for
Halal Diet	No	Kosher Diet	No

NUTRITIONAL INFORMATION AS SOLD

Each 100g/ml portion contains:



of your reference intake.

Typical values per 100g/ml : Energy 448kcal / 1873kj

Nutrient	per 100g	RI per 100g	per 67g serving	RI per 67g serving
Energy (kJ)	1873 kJ	22%	1254.91	15%
Energy (kcal)	448 kcal	22%	300.16	15%
Fat	21.6 g	31%	14.47 g	21%
of which Saturates	13.5 g	68%	9.05 g	45%
Carbohydrate	58.2 g	22%	38.99 g	15%
of which Sugars	29.4 g	33%	19.7 g	22%
Fibre	1.8 g		1.21 g	
Protein	4.2 g	8%	2.81 g	6%
Salt	0.56 g	9%	0.38 g	6%

Serving Size 67 g

Source of Nutritional Information Calculation from known/accepted datasets

SUPPLEMENTARY NUTRITIONAL INFORMATION

HFSS (HIGH IN FAT, SALT AND SUGAR)

HFSS Status	Yes
HFSS Score	21

HANDLING & STORAGE INFORMATION

Directions For Use

Defrost for 6 - 8 hours before serving. Ambient: Store in a cool, dry place. Once opened store in an airtight container and consume within 5 days

Storage Instructions

Store at -18°C or colder. Defrost for 6 - 8 hours before serving. Ambient: Store in a cool, dry place.

Shelf Life from Time of Production 540 Days

ACCREDITATIONS/ CERTIFICATIONS/ ASSURANCE SCHEMES ORIGIN

BRCGS Certified

ISO 14001 (Environmental Management)

Roundtable of Sustainable Palm Oil (RSPO)

Product Country of Origin United Kingdom

Additional Origin Details

Produced in Scotland

Origin of the Primary Ingredient Canada, Denmark, France, Germany, Poland, United Kingdom, United States of America

PRODUCT CHARACTERISTICS

Standards Testing

Do you undertake trend analysis of microbiological results? No

Is shelf life testing undertaken? No

CONFIGURATION

Case Configuration

Inner Pack Configuration

Variable Inner Components in Outer Case Yes

Is Inner Pack Splittable? No

Total Quantity of Inner Components in Outer Case 1 Units

Quantity of Inner Components in Inner Pack 12

Count per Inner Component 12

PRODUCT WEIGHTS

Inner Component

Variable Weight Consumer Item Yes

Inner Component Weight 67 g

Outer Case

Outer Case Gross Weight 0.91 kg

Outer Case Net Weight 0.8 kg

PRODUCT DIMENSIONS

Inner Component

Inner Component Depth 201 mm

Inner Component Width 260 mm

Inner Component Height 60 mm

Outer Case

Outer Case Depth 260 mm

Outer Case Width 203 mm

Outer Case Height 61 mm

PALLET INFORMATION

Quantity of Cases Per Pallet Layer 17 Cases

Pallet Height 1.7 MTR

Quantity of Layers Per Pallet 12 Layers

Quantity of Cases Per Pallet 204 Cases

PACKAGING

Inner Component Packaging

Type	Materials	Weight	Recycled Plastic %	Recyclable	Returnable	Composite
Layer Card	Paper/Cardboard / Cardboard	33 g	- %	Yes	No	
Wrapper	Plastic / OPP (Oriented Polypropylene)	7 g	- %	Yes	No	

Outer Case Packaging

Type	Materials	Weight	Recycled Plastic %	Recyclable	Returnable	Composite
Label	Paper/Cardboard / Paper	1 g	- %	Yes	No	
Box	Paper/Cardboard / Cardboard	104 g	- %	Yes	No	

SAFETY & WARNINGS

OTHER INFORMATION

Commodity Code 1905201000

Manufacturer Comments

Product is sold by count - 12 pieces per box

CONTACT INFORMATION

Address

Lomond Fine Foods Ltd
75 Keppochhill Drive
70 Spiersbridge Road, Thornliebank, Glasgow, G46 7SN
Springburn
Glasgow
G21 1HX
Scotland

P: (Phone) 0141 353 6777

The information on the [Erudus System](#) has been supplied by the manufacturers of the products and, whilst the owners of the Erudus System take steps to ensure the information is regularly updated, they give no warranty and no guarantee that the information is accurate. Product information and ingredients may change, please always read product labels carefully in addition to using the information provided by Erudus.

We do not accept liability for any inaccuracies or incorrect information contained on this site.
Please visit <http://www.erudus.com/terms-and-conditions> for full terms and conditions.