

Changed Sep 05, 2024 10:32

Reviewed Sep 05, 2024 10:32

Erudus ID a32d0847c9c74dc0af16db471da5c44b

Version 4.0

55907

Mini Yule Log Loaf 1x8 ptn

Mini Yule Log Loaf Cake

PRODUCT DESCRIPTION

Chocolate sponge Yule log topped with chocolate fudgeice, milk chocolate flake and lightly sprinkled with dusting sugar

Brand	CAKE
Manufacturer Product Code	55907
Product Type	Food
Product Category	Cakes and Tarts
Storage Type	Frozen
Erudus ID	a32d0847c9c74dc0af16db471da5c44b
Specification Type	Bakery Products

Outer Case GTIN 5060268094130



INGREDIENTS

Ingredient Declaration

Chocolate Cake Mix (Sugar, Wheat Flour (**WHEAT** Flour, Calcium Carbonate, Iron, Niacin, Thiamin), Fat Reduced Cocoa Powder, Chocolate Powder (Cocoa Mass, Sugar, Cocoa Butter, **SOYA** Lecithin, Natural Vanilla Flavouring), Rapeseed Oil, Cornflour, Raising Agent (Sodium Acid Pyrophosphate, Sodium Carbonates), Starch, Emulsifiers (Polyglycerol Esters of Fatty Acids, Mono-and Diglycerides of Fatty Acids), **MILK** Protein, Dried **EGG** Albumen, Enzymes), Free Range Whole Liquid **EGG**, Water, Rapeseed Oil, Chocolate Fudge icing (Sugar, Glucose Syrup, Vegetable Oils (Palm, Rapeseed), Fat Reduced Cocoa Powder, Water, Whey Powder (**MILK**), Emulsifiers (Mono- and Diglycerides of Fatty Acids, Polyglycerol Polyricinoleate), Flavouring, Salt, Preservative (Potassium Sorbate)), Indulgent Chocolate Icing (Sugar, Water, Cocoa Powder, Vegetable Oil (Palm), Anhydrous **MILK** Fat, Dextrose, Fructose, Humectant (Glycerine), Emulsifier (Esters of Fatty Acids, Sunflower Lecithin), Natural Flavouring, Salt, Acidity Regulator (Glucono Delta-lactone), Preservative (Potassium Sorbate)), Milk Chocolate Flake (**MILK**, Sugar, Cocoa Mass, Cocoa Butter, Whey Permeate Powder (**MILK**), Vegetable Fats (Palm, Shea), Whole **MILK** Powder, Emulsifier (Ammonium Phosphatides, Polyglycerol Polyricinoleate), Flavourings), Dusting Sugar (Dextrose, Cornflour, Vegetable Oil (Palm Oil)).

ALLERGENS

Product Contains:

Celery/Celery	No	Mustard	No
Cereals Containing Gluten	Yes	Nuts (Tree)	May Contain
Barley	May Contain	Almond nuts	May Contain
Oats	May Contain	Brazil nuts	No
Rye	No	Cashew nuts	No
Wheat (including Spelt and Khorasan)	Yes	Hazelnuts	May Contain
Crustacea	No	Macadamia (Queensland) nuts	No
Eggs	Yes	Pecan nuts	No
Fish	No	Pistachio nuts	May Contain
Lupin	No	Walnuts	May Contain
Milk	Yes	Peanuts	No
Molluscs	No	Sesame Seeds	No
		Soybeans	Yes
		Sulphur Dioxide and Sulphites	May Contain

Risk Source:

Barley (Risk Source)	Line	Oats (Risk Source)	Line
Tree Nuts (Risk Source)	Line	Almond nuts (Risk Source)	Line
Hazelnuts (Risk Source)	Line	Pistachio nuts (Risk Source)	Line
Walnuts (Risk Source)	Line	Sulphur Dioxide and Sulphites (Risk Source)	Line

Additional Allergen Information

Allergy Advice: For allergens, including cereals containing gluten, see ingredients in bold. May also contain traces of oats, barley, tree nuts and sulphites

SUPPLEMENTARY
INGREDIENT
INFORMATION

Palm Oil	Yes
Hydrogenated Vegetable Oil/Fat	No
GM Protein/DNA	No

ADDITIVES

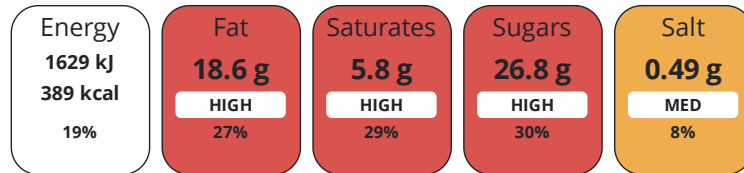
Product Contains:

Artificial Antioxidants	No	Artificial Flavourings	No
Artificial Colours	Yes	Artificial Preservatives	Yes
Artificial Flavour Enhancers	No	Artificial Sweeteners	No
Vegan Diet	No	Vegetarian Diet	Suitable for
Halal Diet	No	Kosher Diet	No

DIET
SUITABILITY

NUTRITIONAL
INFORMATION

Each 100g/ml portion contains:



of your reference intake.

Typical values per 100g/ml : Energy 389kcal / 1629kJ

Nutrient	per 100g	RI per 100g	per 70g serving	RI per 70g serving
Energy (kJ)	1629 kJ	19%	1140.3 kJ	14%
Energy (kcal)	389 kcal	19%	272.3 kcal	14%
Fat	18.6 g	27%	13 g	19%
of which Saturates	5.8 g	29%	4.1 g	21%
Carbohydrate	49.5 g	19%	34.7 g	13%
of which Sugars	26.8 g	30%	18.8 g	21%
Fibre	2.6 g		1.8 g	
Protein	5 g	10%	3.5 g	7%
Salt	0.49 g	8%	0.3 g	5%

Serving Size 70 g

SUPPLEMENTARY
NUTRITIONAL
INFORMATION

HFSS (HIGH IN
FAT, SALT AND
SUGAR)

HFSS Status	Yes
HFSS Score	13

HANDLING & STORAGE INFORMATION

Directions For Use

Defrost for 6 - 8 hours before serving. Ambient: Store in a cool, dry place. Once opened store in an airtight container and consume within 5 days

Storage Instructions

Storage: Store at -18°C or colder. Defrost for 6 - 8 hours before serving. Ambient: Store in a cool, dry place.

Shelf Life from Time of Production 540 Days

ACCREDITATIONS/ CERTIFICATIONS/ ASSURANCE SCHEMES ORIGIN

BRCGS Certified **ISO 14001 (Environmental Management)**

Roundtable of Sustainable Palm Oil (RSPO)

Product Country of Origin/Place of Provenance United Kingdom

Additional Origin Details

Produced in Scotland

PRODUCT CHARACTERISTICS

Standards Testing

Do you undertake trend analysis of microbiological results? Yes

Is shelf life testing undertaken? No

CONFIGURATION

Case Configuration

Inner Pack Configuration

Total Quantity of Inner Components in Outer Case 1 Units

Count per Inner Component 8

Is the Outer Case Splittable? No

PRODUCT WEIGHTS

Inner Component

Variable Weight Consumer Item Yes

Inner Component Weight 0.06 kg

Outer Case

Outer Case Gross Weight 0.79 kg

Outer Case Net Weight 0.45 kg

PRODUCT DIMENSIONS

Inner Component

Inner Component Depth 203 mm

Inner Component Width 260 mm

Inner Component Height 60 mm

Outer Case

Outer Case Depth 260 mm

Outer Case Width 203 mm

Outer Case Height 60 mm

PALLET INFORMATION

Quantity of Cases Per Pallet Layer 17 Cases

Pallet Type UK Standard Pallet

Quantity of Layers Per Pallet 12 Layers

Pallet Height 1.7 MTR

Quantity of Cases Per Pallet 204 Cases

PACKAGING

Inner Component Packaging

Type	Materials	Weight	Recycled Plastic %	Recyclable	Returnable	Composite
Box	Paper/Cardboard	132 g	- %			

Outer Case Packaging

Type	Materials	Weight	Recycled Plastic %	Recyclable	Returnable	Composite
Case	Paper/Cardboard	132 g	- %			

OTHER
INFORMATION

Commodity Code 1905201000

Manufacturer Comments

1x8 mini loaves

CONTACT
INFORMATION

Address

Lomond Fine Foods Ltd
75 Keppochhill Drive
70 Spiersbridge Road, Thornliebank, Glasgow, G46 7SN
Springburn
Glasgow
G21 1HX
Scotland

P: (Phone) 0141 353 6777

The information on the [Erudus System](#) has been supplied by the manufacturers of the products and, whilst the owners of the Erudus System take steps to ensure the information is regularly updated, they give no warranty and no guarantee that the information is accurate. Product information and ingredients may change, please always read product labels carefully in addition to using the information provided by Erudus.

We do not accept liability for any inaccuracies or incorrect information contained on this site.
Please visit <http://www.erudus.com/terms-and-conditions> for full terms and conditions.