

Changed Dec 06, 2024 11:23

Reviewed Dec 06, 2024 11:23

Erudus ID c1d9b22614394c579b20278cd8229dd5

Version 5.0

Status Published

63947 Nutella Tiffin 15ptn

Nutella Tiffin

PRODUCT DESCRIPTION

Biscuit base with choloate flavour coating and sultanas topped with nutella and chocolate flavour coating finished with mild chocolate compound and sugar coated hazelnut pieces

Brand	CAKE
Manufacturer Product Code	63947
Product Type	Food
Product Category	Traybake
Storage Type	Frozen
Erudus ID	c1d9b22614394c579b20278cd8229dd5
Specification Type	Bakery Products



Inner Component GTIN 5060268093393

Inner Pack GTIN 5060268093393

Outer Case GTIN 15060268093390



INGREDIENTS

Ingredient Declaration

Milk Chocolate Flavour Topping (Sugar; Vegetable Fats (Palm Kernel, Palm), Whey Powder (**MILK**), Wheat Flour (**WHEAT** Flour, Calcium Carbonate, Niacin, Iron, Thiamin), Fat Reduced Cocoa Powder, Emulsifier (**SOYA** Lecithin, Polyglycerol Polyricinoleate), Natural Flavouring), Digestive Biscuit Pieces (Wheat Flour (**WHEAT** Flour, Calcium Carbonate, Iron, Niacin, Thiamin), Wholemeal **WHEAT** Flour, Vegetable Shortening (Palm Oil, Rapeseed Oil), Sugar, Partially Invert Sugar Syrup, Raising Agents (Sodium Bicarbonate, Ammonium Bicarbonate), Salt), Digestive Biscuit Pieces (Wheat Flour (**WHEAT** Flour, Calcium Carbonate, Iron, Niacin, Thiamin), Wholemeal **WHEAT** Flour, Vegetable Shortening (Palm Oil, Rapeseed Oil), Sugar, Partially Invert Sugar Syrup, Raising Agents (Sodium Bicarbonate, Ammonium Bicarbonate), Salt), Margarine (Palm Oil, Rapeseed Oil, Water, Salt, Emulsifier (Mono and Diglycerides of Fatty Acids), Flavouring, Colours (Annatto Bixin, Curcumin)), Nutella (9%) (Sugar, Palm Oil, **HAZELNUTS (NUTS)**, Skimmed **MILK** Powder, Fat Reduced Cocoa, Emulsifier (**SOYA** Lecithin), Vanillin), Sultanas (Sultanas, Sunflower Oil), Invert Sugar Syrup, Sugar Coated Hazelnut Pieces (1%) (Sugar, **HAZELNUTS (NUTS)**)).

ALLERGENS

Product Contains:

Celery/Celery	No
Cereals Containing Gluten	Yes
Barley	May Contain
Oats	May Contain
Rye	No
Wheat (including Spelt and Khorasan)	Yes
Crustacea	No
Eggs	May Contain
Fish	No
Lupin	No
Milk	Yes
Molluscs	No

Mustard	No
Nuts (Tree)	Yes
Almond nuts	May Contain
Brazil nuts	No
Cashew nuts	No
Hazelnuts	Yes
Macadamia (Queensland) nuts	No
Pecan nuts	No
Pistachio nuts	May Contain
Walnuts	May Contain
Peanuts	No
Sesame Seeds	No
Soybeans	Yes
Sulphur Dioxide and Sulphites	May Contain

Risk Source:

Barley (Risk Source)	Line
Eggs (Risk Source)	Line
Pistachio nuts (Risk Source)	Line
Sulphur Dioxide and Sulphites (Risk Source)	Line

Oats (Risk Source)	Line
Almond nuts (Risk Source)	Line
Walnuts (Risk Source)	Line

Allergen Statement On Pack

Allergy Advice: For allergens, including cereals containing gluten, see ingredients in bold. May also contain traces of Oats, Barley, Sulphites, other Tree Nuts and Eggs

SUPPLEMENTARY INGREDIENT INFORMATION

Palm Oil	Yes
Hydrogenated Vegetable Oil/Fat	No
GM Protein/DNA	No

ADDITIVES

Product Contains:

Artificial Antioxidants	No
Artificial Colours	Yes
Artificial Flavour Enhancers	No

Artificial Flavourings	Yes
Artificial Preservatives	Yes
Artificial Sweeteners	No

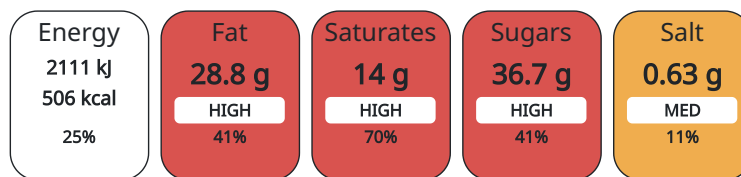
DIET SUITABILITY

Vegan Diet	No
Halal Diet	No

Vegetarian Diet	Suitable for
Kosher Diet	No

NUTRITIONAL INFORMATION AS SOLD

Each 100g/ml portion contains:



of your reference intake.

Typical values per 100g/ml : Energy 506kcal / 2111kJ

Nutrient	per 100g	RI per 100g	per 93g serving	RI per 93g serving
Energy (kj)	2111 kj	25%	1963.23	23%
Energy (kcal)	506 kcal	25%	470.58	24%
Fat	28.8 g	41%	26.78 g	38%
of which Saturates	14 g	70%	13.02 g	65%
Carbohydrate	56.7 g	22%	52.73 g	20%
of which Sugars	36.7 g	41%	34.13 g	38%
Fibre	1.3 g		1.21 g	
Protein	4.4 g	9%	4.09 g	8%
Salt	0.63 g	11%	0.59 g	10%

Serving Size	93 g
Number of Servings	15 Servings

Source of Nutritional Information Calculation from known/accepted datasets

SUPPLEMENTARY NUTRITIONAL INFORMATION

HFSS (HIGH IN FAT, SALT AND SUGAR)

HFSS Status	Yes
HFSS Score	25

HANDLING & STORAGE INFORMATION

Directions For Use

Keep frozen until ready to defrost

Storage Instructions

Storage: Store at -18°C or colder. Defrost for 6 - 8 hours before serving. Store unopened in a cool dry place for up to 90 days for ambient shelflife. Eat within 5 days of opening.

Storage Instructions After Opening

Store in an air tight container and consume within 5 days.

Shelf Life from Time of Production	540 Days	Exempt From Shelf Life Labelling	Yes
Shelf Life From Opening	5 Days		

ACCREDITATIONS/ CERTIFICATIONS/ ASSURANCE SCHEMES ORIGIN

BRCGS Certified	ISO 14001 (Environmental Management)
ISO 45001 (Occupational Health and Safety)	Roundtable of Sustainable Palm Oil (RSPO)

Product Country of Origin Scotland

Additional Origin Details

Produced in Scotland

Origin of the Primary Ingredient

PRODUCT CHARACTERISTICS

Standards Testing

Do you undertake trend analysis of microbiological results?	Yes	Is shelf life testing undertaken?	Yes
---	-----	-----------------------------------	-----

Microbiological Standards

Organism	Description	Frequency	Target	Maximum	Sample (g or ml)
E. Coli (cfu/g or ml)		Occasionally	<0	10	100
Enterobacteriaceae (cfu/g or ml)		Occasionally	<10	100	100
Listeria SPP (cfu/g or ml)		Occasionally	<0	100	100
Staphylococcus Aureus (cfu/g or ml)	Reject if present	Occasionally	<0	0	100

Organism	Description	Frequency	Target	Maximum	Sample (g or ml)
Salmonella (cfu/g or ml)	Reject if present	Occasionally	<0	0	100
Yeast (cfu/g or ml)		Occasionally	<100	1000	100
Moulds (cfu/g or ml)		Occasionally	<100	1000	100
Aerobic Colony Count (ACC) (cfu/g or ml)		Occasionally	<1000	10000	100

CONFIGURATION

Case Configuration		Inner Pack Configuration			
Total Quantity of Inner Components in Outer Case	10 Units	Is Inner Pack Splittable?	No		
		Count per Inner Component	15		

PRODUCT WEIGHTS

Inner Component		Inner Pack			
Variable Weight Consumer Item	Yes	Inner Pack Gross Weight	1.5 kg		
Inner Component Weight	1.6 kg	Inner Pack Net Weight	1.4 kg		
Outer Case					
Outer Case Gross Weight	14.75 kg				
Outer Case Net Weight	13.88 kg				

PRODUCT DIMENSIONS

Inner Component	
Inner Component Depth	200 mm
Inner Component Width	302 mm
Inner Component Height	31 mm
Outer Case	
Outer Case Depth	407 mm
Outer Case Width	334 mm
Outer Case Height	225 mm

PALLET INFORMATION

Quantity of Cases Per Pallet Layer	8 Cases	Pallet Type	UK Standard Pallet		
Quantity of Layers Per Pallet	5 Layers	Pallet Height	1.7 MTR		
Quantity of Cases Per Pallet	40 Cases				

PACKAGING

Inner Component Packaging						
Type	Materials	Weight	Recycled Material %	Recyclable	Returnable	Composite
Foil	Plastic	5 g				
Foil	Paper/Cardboard	1.5 g				
Foil	Aluminium	28.3 g				
Outer Case Packaging						
Type	Materials	Weight	Recycled Material %	Recyclable	Returnable	Composite
Case	Paper/Cardboard	321.5 g				

SAFETY & WARNINGS

SUSTAINABILITY

OTHER INFORMATION

Commodity Code	1905203000
-----------------------	------------

CONTACT
INFORMATION

Address

Lomond Fine Foods Ltd
75 Keppochhill Drive
70 Spiersbridge Road, Thornliebank, Glasgow, G46 7SN
Springburn
Glasgow
G21 1HX
Scotland

P: (Phone) 0141 353 6777

The information on the [Erudus System](#) has been supplied by the manufacturers of the products and, whilst the owners of the Erudus System take steps to ensure the information is regularly updated, they give no warranty and no guarantee that the information is accurate. Product information and ingredients may change, please always read product labels carefully in addition to using the information provided by Erudus.

We do not accept liability for any inaccuracies or incorrect information contained on this site.
Please visit <http://www.erudus.com/terms-and-conditions> for full terms and conditions.