

12456

Raspberry and Coconut Slice, 12 Portion

Raspberry And Coconut Slice

PRODUCT DESCRIPTION

Sweet short crust pastry base layered with raspberry jam and sweetened milk and coconut topping

Brand	CAKE
Manufacturer Product Code	12456
Product Type	Food
Product Category	Traybake
Storage Type	Frozen
Erudus ID	eeee8d541dbb49fabebb1fd72714b107
Specification Type	Bakery Products
Inner Component GTIN	5060268091153
Outer Case GTIN	15060268091150



INGREDIENTS

Ingredient Declaration

Raspberry Jam (23%) (Glucose Syrup, Sugar, Concentrated Raspberry Puree, Water, Gelling Agent - Pectin; Acidity Regulators - Citric Acid, Trisodium Citrate, Colour - Anthocyanin), WHEAT Flour (WHEAT Flour, Calcium Carbonate, Iron, Niacin, Thiamin), Sweetened Condensed MILK (18%) (MILK, Sugar, Lactose (MILK)), Desiccated Coconut (SULPHITES) (18%), Butter (MILK, Salt), Sugar.

ALLERGENS

Product Contains:

Celery/Celeriac	No	Mustard	No
Cereals Containing Gluten	Yes	Nuts (Tree)	May Contain
Barley	May Contain	Almond nuts	May Contain
Oats	May Contain	Brazil nuts	No
Rye	No	Cashew nuts	No
Wheat (including Spelt and Khorasan)	Yes	Hazelnuts	May Contain
Crustacea	No	Macadamia (Queensland) nuts	No
Eggs	May Contain	Pecan nuts	No
Fish	No	Pistachio nuts	May Contain
Lupin	No	Walnuts	May Contain
Milk	Yes	Peanuts	No
Molluscs	No	Sesame Seeds	No
		Soybeans	May Contain
		Sulphur Dioxide and Sulphites	No

Risk Source:

Barley (Risk Source)	Line	Oats (Risk Source)	Line
Eggs (Risk Source)	Line	Tree Nuts (Risk Source)	Line
Almond nuts (Risk Source)	Line	Hazelnuts (Risk Source)	Line
Pistachio nuts (Risk Source)	Line	Walnuts (Risk Source)	Line
Soybeans (Risk Source)	Line		

Additional Allergen Information

For allergens, including cereals containing gluten, refer to ingredients in CAPITALS May contain traces of: oats, barley, tree nuts, egg, soya.

SUPPLEMENTARY INGREDIENT INFORMATION

Palm Oil	No
Hydrogenated Vegetable Oil/Fat	No
GM Protein/DNA	No

ADDITIVES

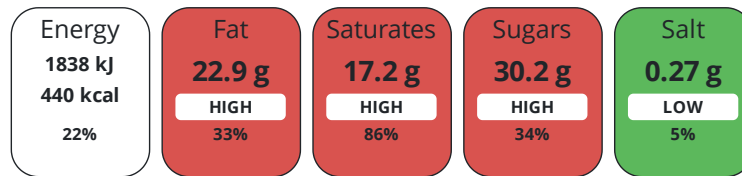
Product Contains:

Artificial Antioxidants	No	Artificial Flavourings	No
Artificial Colours	No	Artificial Preservatives	No
Artificial Flavour Enhancers	No	Artificial Sweeteners	No
Vegan Diet	No	Vegetarian Diet	Suitable for
Halal Diet	No	Kosher Diet	No

DIET SUITABILITY

NUTRITIONAL INFORMATION

Each 100g/ml portion contains:



of your reference intake.

Typical values per 100g/ml : Energy 440kcal / 1838kj

Nutrient	per 100g	RI per 100g
Energy (kJ)	1838 kJ	22%
Energy (kcal)	440 kcal	22%
Fat	22.9 g	33%
of which Saturates	17.2 g	86%
Carbohydrate	51.8 g	20%
of which Sugars	30.2 g	34%
Fibre	3.2 g	
Protein	5.2 g	10%
Salt	0.27 g	5%

SUPPLEMENTARY NUTRITIONAL INFORMATION

HANDLING & STORAGE INFORMATION

Directions For Use

Frozen: 1 year from date of manufacture Ambient: 90 days Once opened store in an airtight container and consume within 5 days

Storage Instructions

Store at -18°C or colder. Defrost for 6 - 8 hours before serving. Ambient: Store in a cool, dry place.

Shelf Life from Time of Production 540 Days

ACCREDITATIONS/ CERTIFICATIONS/ ASSURANCE SCHEMES ORIGIN

BRCGS Certified

Roundtable of Sustainable Palm Oil (RSPO)

Product Country of Origin/Place of United Kingdom

Provenance

PRODUCT CHARACTERISTICS	Standards Testing						
	Do you undertake trend analysis of microbiological results?	Yes	Is shelf life testing undertaken?		No		
CONFIGURATION	Case Configuration		Inner Pack Configuration				
	Total Quantity of Inner Components in Outer Case	10 Units					
PRODUCT WEIGHTS	Inner Component						
	Variable Weight Consumer Item	Yes					
	Inner Component Weight	1.08 kg					
	Outer Case						
	Outer Case Gross Weight	11.14 kg					
	Outer Case Net Weight	10.8 kg					
PRODUCT DIMENSIONS	Inner Component						
	Inner Component Depth	302 mm					
	Inner Component Width	200 mm					
	Inner Component Height	31 mm					
	Outer Case						
	Outer Case Depth	407 mm					
	Outer Case Width	334 mm					
	Outer Case Height	225 mm					
	PALLET INFORMATION	Quantity of Cases Per Pallet Layer	8 Cases	Pallet Height		1.7 MTR	
		Quantity of Layers Per Pallet	5 Layers				
Quantity of Cases Per Pallet		40 Cases					
PACKAGING	Inner Component Packaging						
	Type	Materials	Weight	Recycled Plastic %	Recyclable	Returnable	Composite
	Foil	Plastic	5 g	- %			
	Foil	Paper/Cardboard	1.5 g	- %			
	Foil	Aluminium	29 g	- %			
	Outer Case Packaging						
	Type	Materials	Weight	Recycled Plastic %	Recyclable	Returnable	Composite
	Case	Plastic	50 g	- %			
	Case	Paper/Cardboard	323 g	- %			
	OTHER INFORMATION	Manufacturer Comments					
		Product is sold by count - 12 pieces per foil					

CONTACT
INFORMATION

Address

Lomond Fine Foods Ltd
75 Keppochhill Drive
70 Spiersbridge Road, Thornliebank, Glasgow, G46 7SN
Springburn
Glasgow
G21 1HX
Scotland

P: (Phone) 0141 353 6777

The information on the [Erudus System](#) has been supplied by the manufacturers of the products and, whilst the owners of the Erudus System take steps to ensure the information is regularly updated, they give no warranty and no guarantee that the information is accurate. Product information and ingredients may change, please always read product labels carefully in addition to using the information provided by Erudus.

We do not accept liability for any inaccuracies or incorrect information contained on this site.
Please visit <http://www.erudus.com/terms-and-conditions> for full terms and conditions.