

66100

Yoghurt and Cranberry Slice

Yoghurt And Cranberry Slice

PRODUCT DESCRIPTION

Biscuit crumble base with puffed rice, sultanas, glace cherries and cranberries topped with yoghurt flavour coating

Brand	CAKE
Manufacturer Product Code	66100
Product Type	Food
Product Category	Traybake
Storage Type	Frozen
Erudus ID	ca3bcdba9a794af6942c4741aca88b33
Specification Type	Bakery Products



Inner Component GTIN	5060268090194
Outer Case GTIN	15060268090191



INGREDIENTS

Ingredient Declaration

Biscuit (32%) (Wheat Flour (**WHEAT** Flour, Calcium Carbonate, Iron, Niacin, Thiamin), Wholemeal **WHEAT** Flour, Sugar, Vegetable Oil (Palm, Rapeseed), Partially Inverted Sugar Syrup, **WHEAT** Starch, Raising Agents (Sodium Bicarbonate, Ammonium Bicarbonate), **SOYA** Flour, Dried Glucose Syrup, Salt, Flavourings), Yoghurt Flavour Coating (30%) (Sugar, Vegetable Oil (Palm), Whey Powder (**MILK**), Wheat Flour (**WHEAT** Flour, Calcium Carbonate, Iron, Niacin, Thiamin), Skimmed **MILK** Yoghurt Powder, Emulsifier (**SOYA** Lecithin)), Invert Sugar Syrup, Margarine (Vegetable Oils (Palm, Rapeseed), Water, Salt, Emulsifier (Mono- and Diglycerides of Fatty Acids), Colours (Annatto Bixin, Curcumin)), Sultanas (5%), Rice Crispies(4.5%) (Ground Rice Flour, Fine Rice Bran, Granulated Sugar, Rice Bran Extract), Cranberries (2.7%) (Cranberries, Sugar, Sunflower Oil), Glace Cherries (2.7%) (Cherries, Glucose-Fructose Syrup, Sucrose, Preservatives (Potassium Sorbate, Sulphur Dioxide (**SULPHITES**)), Acidity Regulator (Citric Acid), Colour (Erythrosine)).

ALLERGENS

Product Contains:

Celery/Celery	No	Mustard	No
Cereals Containing Gluten	Yes	Nuts (Tree)	May Contain
Barley	May Contain	Almond nuts	May Contain
Oats	May Contain	Brazil nuts	No
Rye	No	Cashew nuts	No
Wheat (including Spelt and Khorasan)	Yes	Hazelnuts	May Contain
Crustacea	No	Macadamia (Queensland) nuts	No
Eggs	May Contain	Pecan nuts	No
Fish	No	Pistachio nuts	May Contain
Lupin	No	Walnuts	May Contain
Milk	Yes	Peanuts	No
Molluscs	No	Sesame Seeds	No
		Soybeans	Yes
		Sulphur Dioxide and Sulphites	Yes

Risk Source:

Barley (Risk Source)	Line	Oats (Risk Source)	Line
Eggs (Risk Source)	Line	Tree Nuts (Risk Source)	Line
Almond nuts (Risk Source)	Line	Hazelnuts (Risk Source)	Line
Pistachio nuts (Risk Source)	Line	Walnuts (Risk Source)	Line

Additional Allergen Information

For allergens, including cereals containing gluten, refer to ingredients in CAPITALS May contain traces of: oats, barley, egg and tree nuts

SUPPLEMENTARY
INGREDIENT
INFORMATION

Palm Oil	Yes
Hydrogenated Vegetable Oil/Fat	No
GM Protein/DNA	No

ADDITIVES

Product Contains:

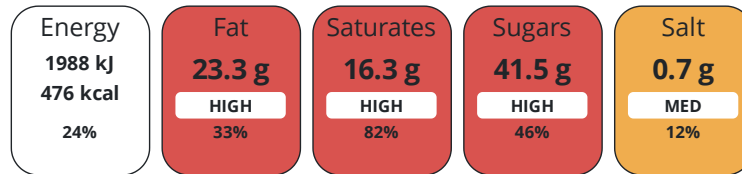
Artificial Antioxidants	No	Artificial Flavourings	No
Artificial Colours	Yes	Artificial Preservatives	Yes
Artificial Flavour Enhancers	No	Artificial Sweeteners	No

DIET
SUITABILITY

Vegan Diet	No	Vegetarian Diet	Suitable for
Halal Diet	No	Kosher Diet	No

NUTRITIONAL
INFORMATION

Each 100g/ml portion contains:



of your reference intake.

Typical values per 100g/ml : Energy 476kcal / 1988kJ

Nutrient	per 100g	RI per 100g
Energy (kJ)	1988 kJ	24%
Energy (kcal)	476 kcal	24%
Fat	23.3 g	33%
of which Saturates	16.3 g	82%
Carbohydrate	62.4 g	24%
of which Sugars	41.5 g	46%
Fibre	1.2 g	
Protein	4.1 g	8%
Salt	0.7 g	12%

SUPPLEMENTARY
NUTRITIONAL
INFORMATION

HANDLING &
STORAGE
INFORMATION

Directions For Use

Frozen: 1 year from date of manufacture Ambient: 90 days Once opened store in an airtight container and consume within 5 days

Storage Instructions

Store at -18°C or colder. Defrost for 6 - 8 hours before serving. Ambient: Store in a cool, dry place.

Shelf Life from Time of Production	540 Days
---	----------

ACCREDITATIONS/
CERTIFICATIONS/
ASSURANCE
SCHEMES
ORIGIN

BRCGS Certified

Roundtable of Sustainable Palm Oil (RSPO)

Product Country of Origin United Kingdom

Additional Origin Details

Produced in Scotland

Origin of the Primary Ingredient

PRODUCT
CHARACTERISTICS

Standards Testing

Do you undertake trend analysis of microbiological results? Yes

Is shelf life testing undertaken? No

CONFIGURATION

Case Configuration

Inner Pack Configuration

Total Quantity of Inner Components in Outer Case 10 Units

PRODUCT
WEIGHTS

Inner Component

Variable Weight Consumer Item Yes

Inner Component Weight 1.2 kg

Outer Case

Outer Case Gross Weight 12.34 kg

Outer Case Net Weight 12 kg

PRODUCT
DIMENSIONS

Inner Component

Inner Component Depth 302 mm

Inner Component Width 200 mm

Inner Component Height 31 mm

Outer Case

Outer Case Depth 407 mm

Outer Case Width 334 mm

Outer Case Height 225 mm

PALLET
INFORMATION

Quantity of Cases Per Pallet Layer 8 Cases

Pallet Height 1.7 MTR

Quantity of Layers Per Pallet 5 Layers

Quantity of Cases Per Pallet 40 Cases

PACKAGING

Inner Component Packaging

Type	Materials	Weight	Recycled Plastic %	Recyclable	Returnable	Composite
Foil	Plastic	5 g	- %			
Foil	Paper/Cardboard	1.5 g	- %			
Foil	Aluminium	29 g	- %			

Outer Case Packaging

Type	Materials	Weight	Recycled Plastic %	Recyclable	Returnable	Composite
Case	Plastic	50 g	- %			
Case	Paper/Cardboard	323 g	- %			

OTHER
INFORMATION

Manufacturer Comments

Product is sold by count - 12 pieces per foil

CONTACT
INFORMATION

Address

Lomond Fine Foods Ltd
75 Keppochhill Drive
70 Spiersbridge Road, Thornliebank, Glasgow, G46 7SN
Springburn
Glasgow
G21 1HX
Scotland

P: (Phone) 0141 353 6777

The information on the [Erudus System](#) has been supplied by the manufacturers of the products and, whilst the owners of the Erudus System take steps to ensure the information is regularly updated, they give no warranty and no guarantee that the information is accurate. Product information and ingredients may change, please always read product labels carefully in addition to using the information provided by Erudus.

We do not accept liability for any inaccuracies or incorrect information contained on this site.
Please visit <http://www.erudus.com/terms-and-conditions> for full terms and conditions.